

INTEGRAL Science Operations Centre

G. Belanger
Science Operations Coordinator

01/12/2021
IUG

Transition to new frame contract was smooth

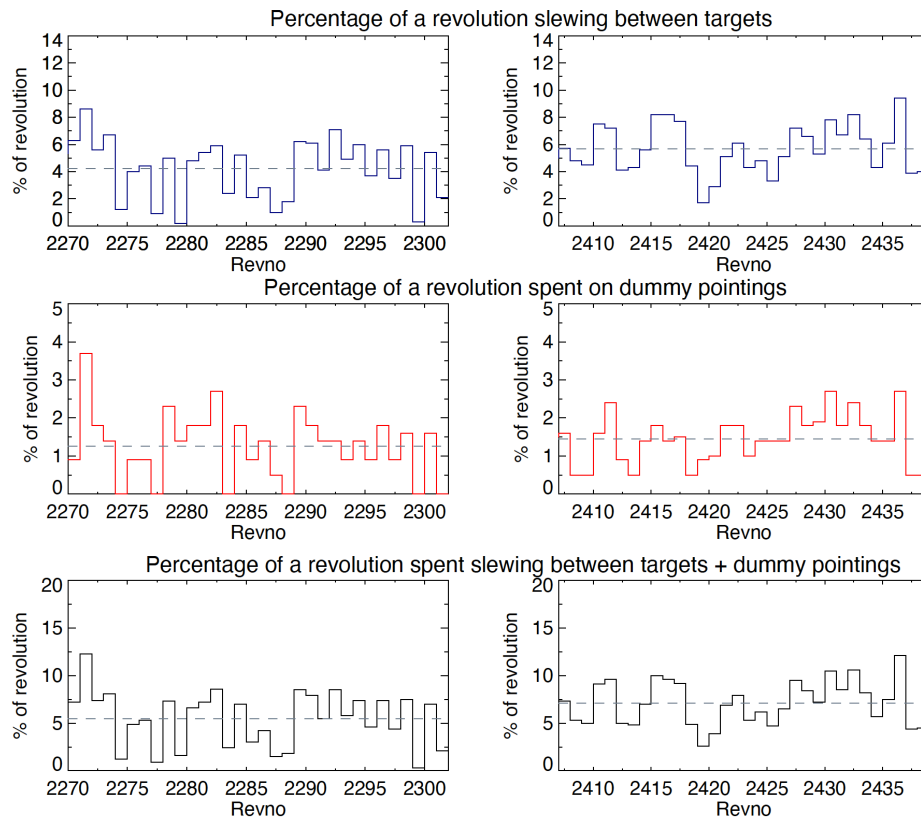


- Team members and expertise were retained
- Monthly work planning introduced across all missions was already our MO
- Detailed Sprint planning with effort estimates and backlog management was also already our MO
- Some admin overheads due to more process control and new information exchange protocols
- Overall very smooth transition with benefits of clear timelines and goals

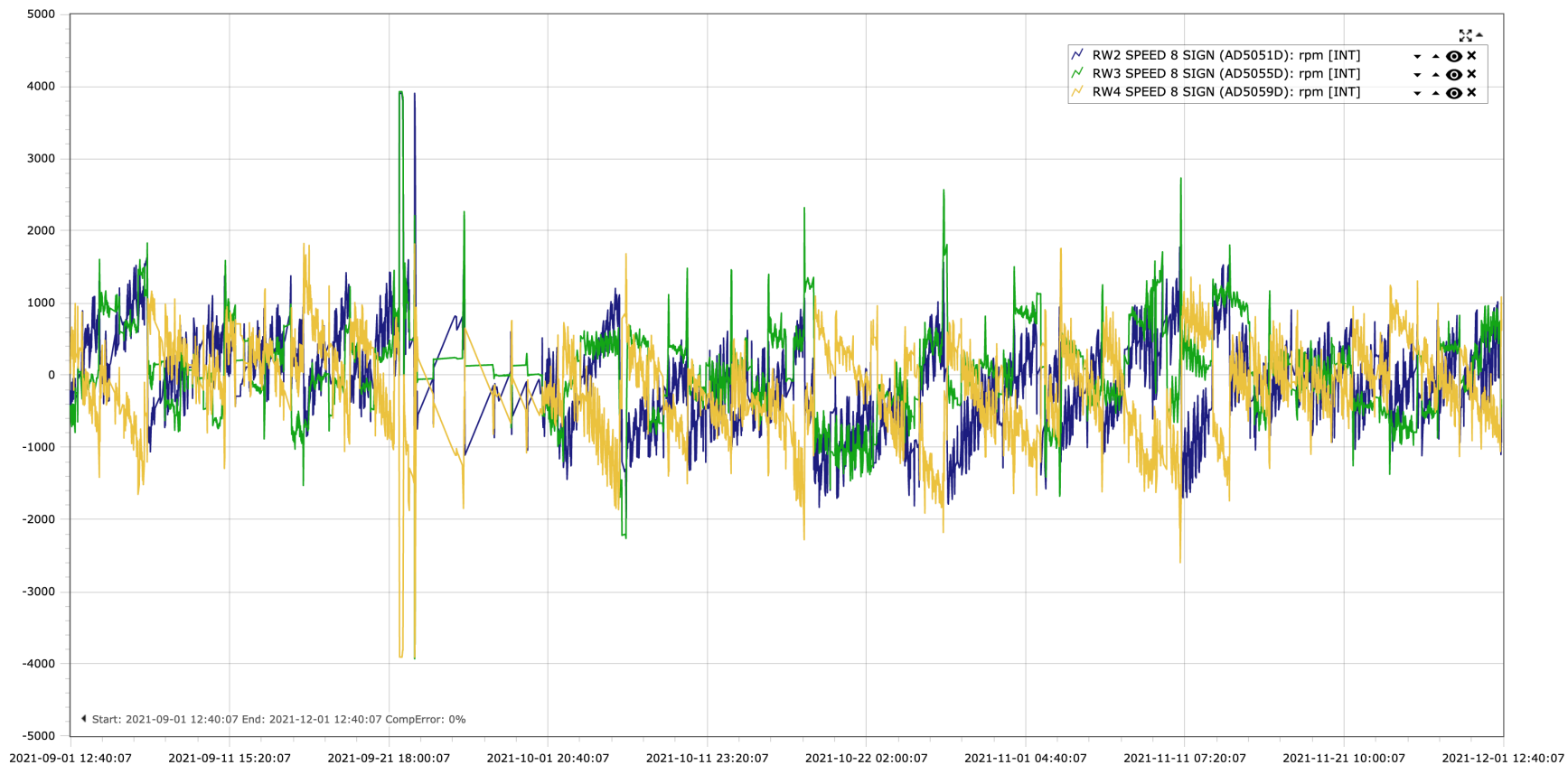


Scheduling efficiency is high

- Time spent slewing about the same as pre-ESAM (5%)
- Time spent on dummy pointings also about the same as pre-ESAM (1.5%)
- New slew stability strategy allows long slews that removes need for dummy pointings will **further improve** efficiency
- Improvements with tools from MOC (Ang. Mom. tool, Torque Evaluation tool, Torque maps)
- (Plots from C. Sanchez)



Wheel speed control is excellent



Science Operations as good as could be



- Team is experienced and committed
- Monthly work cadence and output are great
- Collaboration with MOC brings further improvements both in smooth scheduling and improved spacecraft operations
- Overall performance is excellent for a 20 year-old mission
- Continued improvements on software with MOC
- Fingers crossed for an extension :)

