

SPI: Current Status

- **Current status:**
 - DPE/IASW: Nominal, DPE1 in use
 - ACS: Nominal, except for failed FEEs 57 & 81 which are OFF
 - AFEE: Nominal except for failed GeD #2 & #17 (HV set to 0.5kV) and degraded GeD #12 (HV set to 3.5kV).
 - DFEE: Nominal, DFEE1 in use
 - PSD: Nominal
 - Cryostat: Nominal, cold plate temperature 80K

06/11/2007

Integral Ground Segment
Coordination Meeting



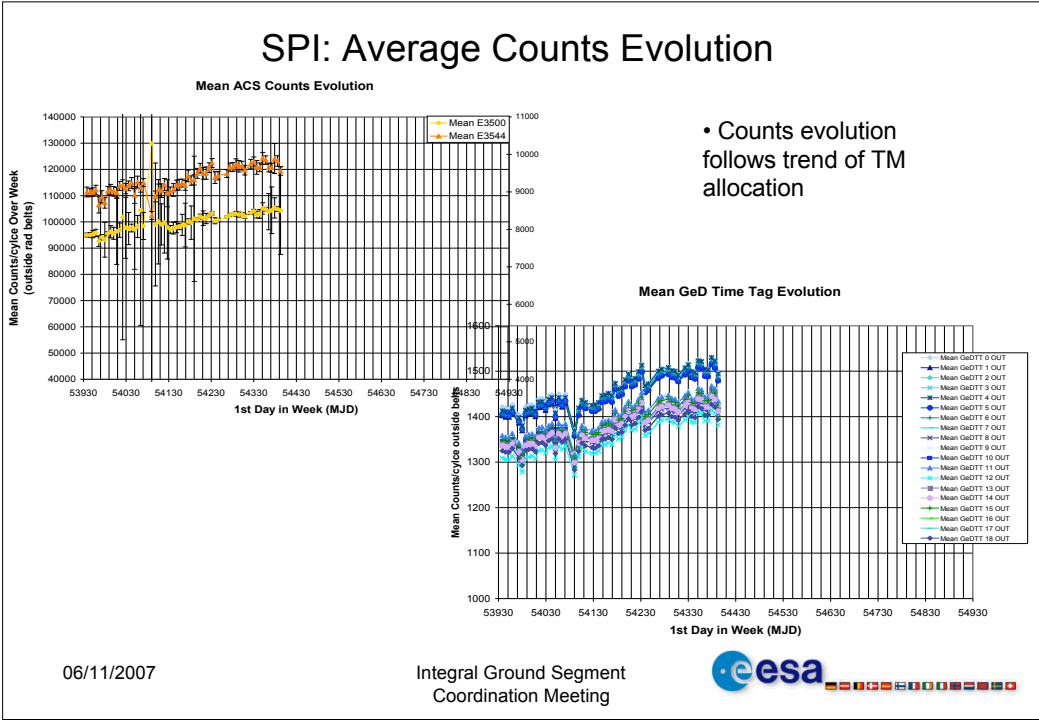
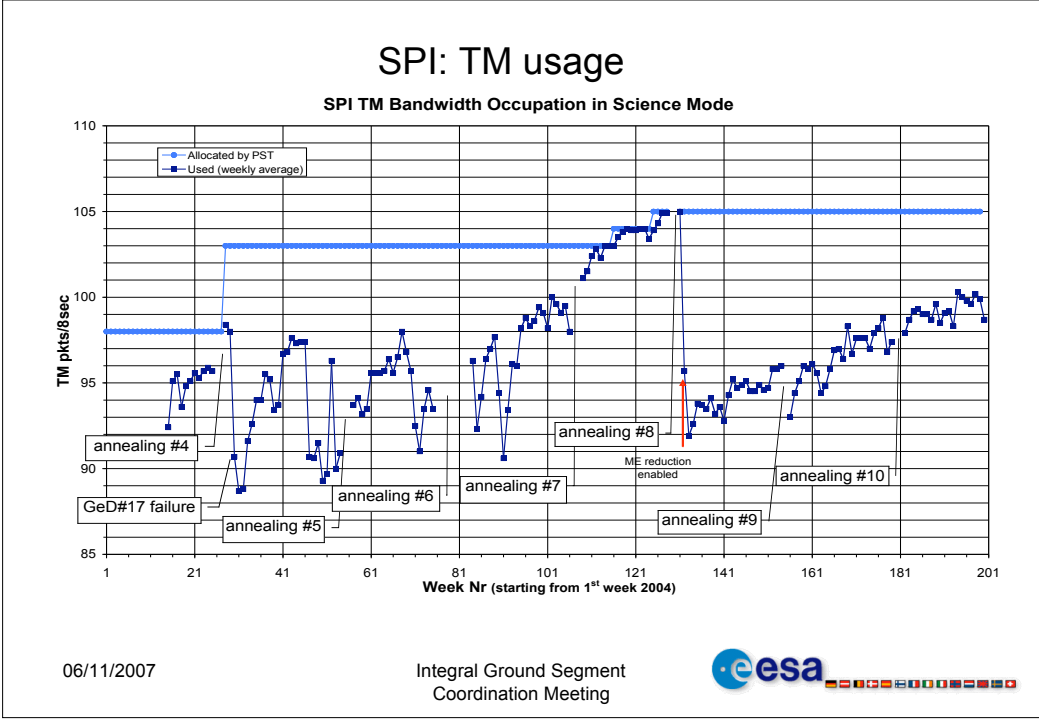
SPI: Pending Anomalies

Anomaly	MM/YY, Anomaly Report ID	Status	Impact
SPI wrong OR report generation by IASW 420 & 430	11/03, INT_SC-70	Pending	None
PSD channel rates malfunction	08/04, INT_SC-90 03/06, INT_SC-142 03/07, INT_SC-179 07/07, INT_SC-194	Pending: Thought fixed by configuration change but re-occurring	None
GeD12 degradation	02/07, INT_SC-180	Pending	Operation with GeD12 HV at 3.5kV
Problem in acquisition of block 10 of SPID 60602 at radiation belt exit	09/07, INT_SC-205	Pending	Incorrect TM & false OOL for a brief period (max 10 mins)

06/11/2007

Integral Ground Segment
Coordination Meeting





IBIS: Current Status

- **Current Status:**
 - DPE: Nominal, DPE1 in use
 - ISGRI: Nominal
 - PICsIT: Nominal
 - VETO: Nominal (though recently new anomalies of HV breakdown in >1 VDM)

06/11/2007

Integral Ground Segment
Coordination Meeting



IBIS: Current Status

- Major anomalies since launch:
 - 2 DPE crashes:
 - on 02/06/2004
 - on 12/01/2005
 - HEPI Histograms I/F break-down on 05/06/2005
- Other anomalies:
 - 4 PICsIT Modules Latch-Up since launch
 - 13 VDM High-Voltage Break-down since launch

06/11/2007

Integral Ground Segment
Coordination Meeting



IBIS: Pending Anomalies

Anomaly	MM/YY, Anomaly Report ID	Status	Impact
IBIS: VETO TC rejected during the execution of VETO patch 3.2	11/05, INT_SC-130	Pending, suggested closed (FdM) as workaround available	Brief interruption to operations
IBIS: VETO CDM1 High Voltage break down	04/07, INT_SC-183	Pending (left open for tracking)	Brief (~30mins) interruption to science ops
IBIS: PICsIT PDM8 in Latch-up mode	04/07, INT_SC-184	Pending (left open for tracking)	Brief (~20 mins) interruption to ops; PDM#8 not operational for ~50mins
IBIS: VETO Calibration, Bottom & Lateral Counters reduced count rates	04/07, INT_SC-185	Pending (left open for tracking)	Science data impacted
IBIS: VETO VDM05, VDM06, VDM07 High Voltage break down	08/07, INT_SC-198	Pending, 1st time occurred on >1 VDM simultaneously	Brief (~30mins) interruption to science ops
IBIS: VETO VDM09 and VDM13 High Voltage break down	10/07, INT_SC-207	Pending	Brief (~40mins) interruption to science ops

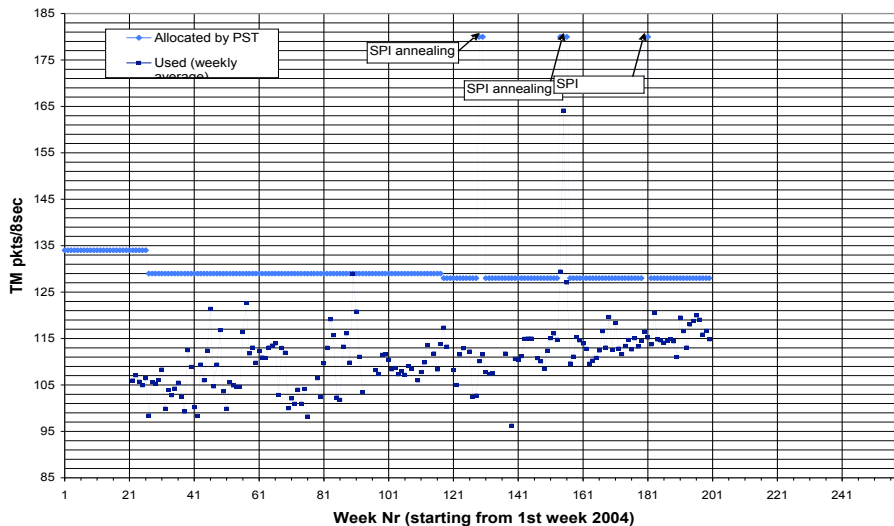
06/11/2007

Integral Ground Segment
Coordination Meeting



IBIS: TM usage

IBIS TM Bandwidth Occupation in Science Mode



06/11/2007

Integral Ground Segment
Coordination Meeting

