

# SPI: Current Status

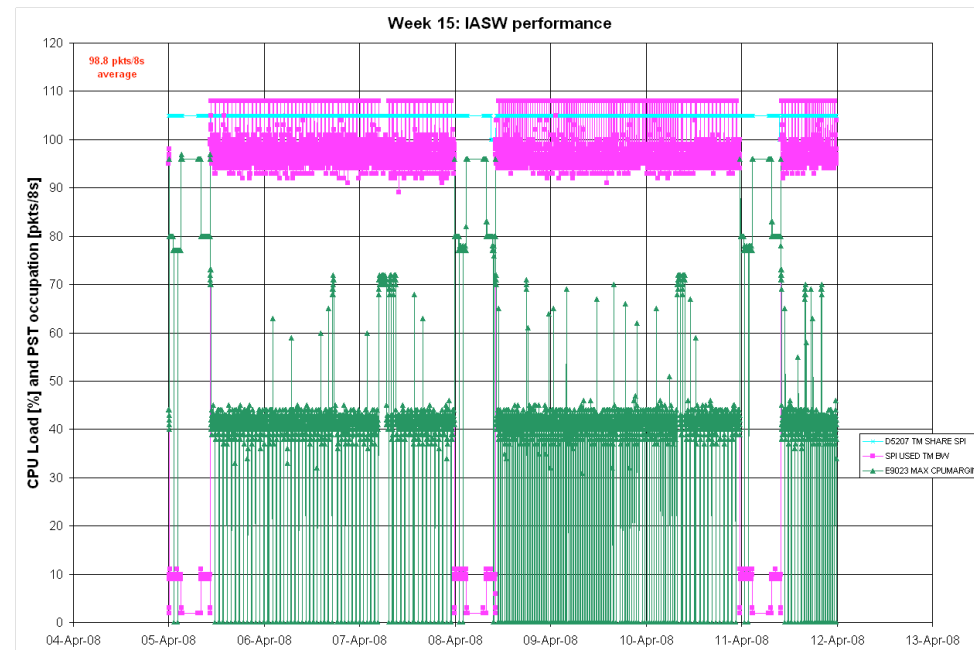
- DPE/IASW: Nominal, DPE1 in use with IASW 4.3.4
- ACS: Nominal, except for failed FEEs 57 & 81 which are OFF
- AFEE: Nominal except for failed GeD #2 & #17 (HV set to 0.5kV) and degraded GeD #12 (HV set to 3.5kV).
- DFEE: Nominal, DFEE1 in use
- PSD: Nominal
- Cryostat: Nominal, cold plate temperature 80K

# SPI: Actions from Last Meeting

- Co/13-05 Review existing procedures regarding SPI HV problems and report:
  - PI reviewed all recovery procedures, particularly relating to HV problems. Recovery procedures approved, with small changes relating to use of redundant chain:
    - 1) AFEE Det Chain LCL A to be used as nominal with DPE2
    - 2) PSD LCL A to be used as nominal with DPE2
- Co/13-06 Contact G. Sarri to obtain information w.r.t. the cryocooler to clarify the required contingency procedures in case of anomalies:
  - G. Sarri contacted and reviewed cryocooler recovery procedures. Inputs, relating to cross-checking of cryocooler TM, incorporated.

# SPI: Open Issues

- TM allocation:
  - Over-allocation of 3 packets in use permanently since 5.2.2008.
  - Additional packets used during spectra downlink.
  - Broadcast Packet not updated.See also presentation later by R.Southworth.

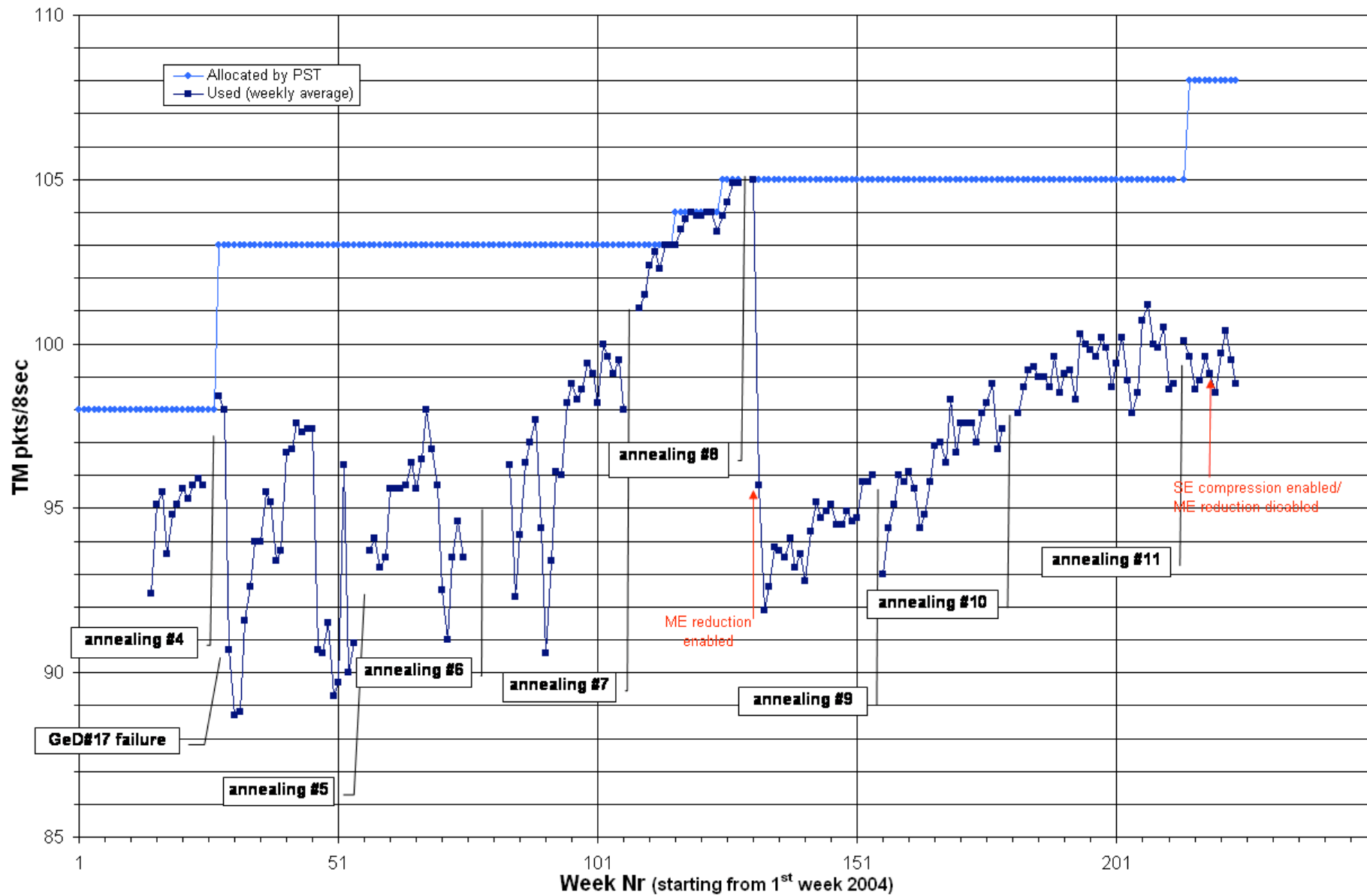


- TM compression:
  - SE compression enabled and ME reduction disabled since 6.3.2008.
  - No observable change in TM usage (15 packets saved used to have full ME).
  - Possible future ME and PE compression? See presentation by F.Cordero

# SPI: Open Anomalies

Anomaly	MM/YY, Anomaly Report ID	Status	Impact
SPI wrong OR report generation by IASW 420 & 430	11/03, INT_SC-70	Pending	None
PSD channel rates malfunction	08/04, INT_SC-90 03/06, INT_SC-142 03/07, INT_SC-179 07/07, INT_SC-194	Pending Not re-occurred since 07/07	None
GeD12 degradation	02/07, INT_SC-180	Pending	Energy resolution improved after Annealing #11, still operating with GeD12 HV at 3.5kV
Problem in acquiring ACS parameters in packet 60601 at belt transition	11/07, INT_SC-211	Pending, also valid for IASW 4.3.4	False OOL for few minutes
Problem in acquiring PSD parameters in packet 60060 at belt transition	11/07, INT_SC-212	Not re-occurred with IASW 434. Proposed closed.	False OOL for few minutes
TM parameter E0229 incorrect	01/08, INT_SC-218	Pending	Parameter unusable, no other impact

### SPI TM Bandwidth Occupation in Science Mode



24/04/2008

Integral Operations Coordination  
Group Meeting #01



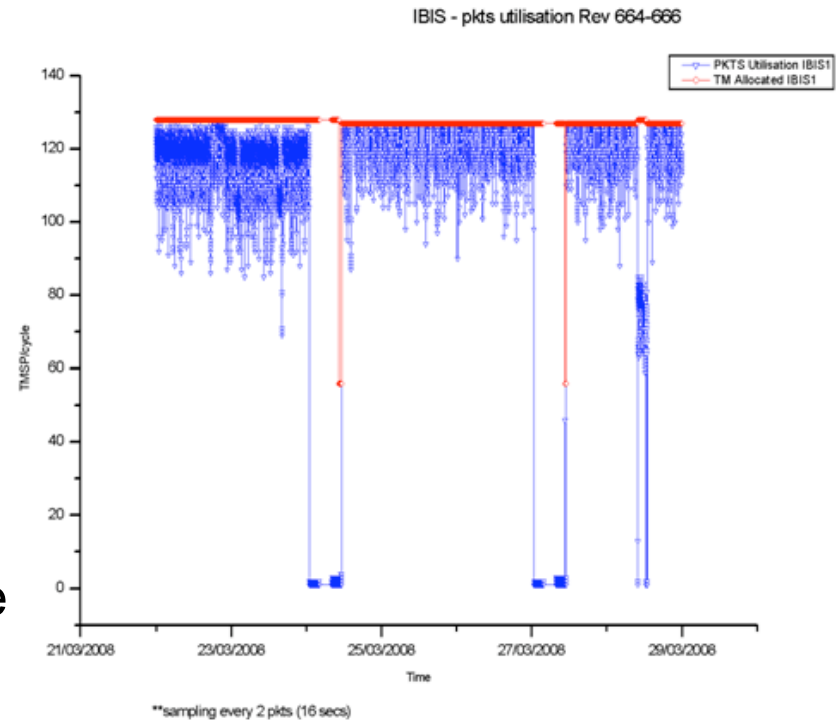
# IBIS: Current Status

- DPE: Nominal, DPE1 in use
- ISGRI: Nominal
- PICsIT: Nominal
- VETO: Nominal

# IBIS: Open Actions and Issues

- Co/08-03 Provide information necessary to have the Commanding and Telemetry database up to date for the redundant unit:
  - PI reviewed DPE2 procedures at MOC. Updated FOP issued.
  - IBIS2 database TC entries reviewed, need detailed review for TM.

- Noisy Pixel Handling Configuration: Manual setting of MCM to 20,000 since rev 665. Should this be permanent?
- TM saturation: IBIS TM bandwidth saturates when bright source in FOV (even with MCM set to 20,000). Is there anything to be done?
- Noisy Pixel OEM: This is issued often during rad belts and is a problem for the SPACON. Change severity from Alarm to Warning (IASW patch)?



24/04/2008

Integral Operations Coordination  
Group Meeting #01



# IBIS: Open Anomalies

Anomaly	MM/YY, Anomaly Report ID	Status	Impact
IBIS: PICsIT PDM8 in Latch-up mode	04/07, INT_SC-184	Pending (left open for tracking)	Brief (~20 mins) interruption to ops; PDM#8 not operational for ~50mins
IBIS: VETO Calibration, Bottom & Lateral Counters reduced count rates	04/07, INT_SC-185	Pending (left open for tracking)	Science data impacted
IBIS: VETO VDM09 and VDM13 High Voltage break down	10/07, INT_SC-207	Pending	Brief (~40mins) interruption to science ops
IBIS: VETO CDM1 High Voltage break down	04/08, INT_SC-221	Pending (left open for tracking)	Brief (~1 hour) interruption to science ops
IBIS VETO Crash	04/08, INT_SC-222	Pending	3 hour interruption to science ops

## Anomalies since last meeting:

- 2 new VDM/CDM HV breakdowns
- VETO Crash

24/04/2008

Integral Operations Coordination  
Group Meeting #01

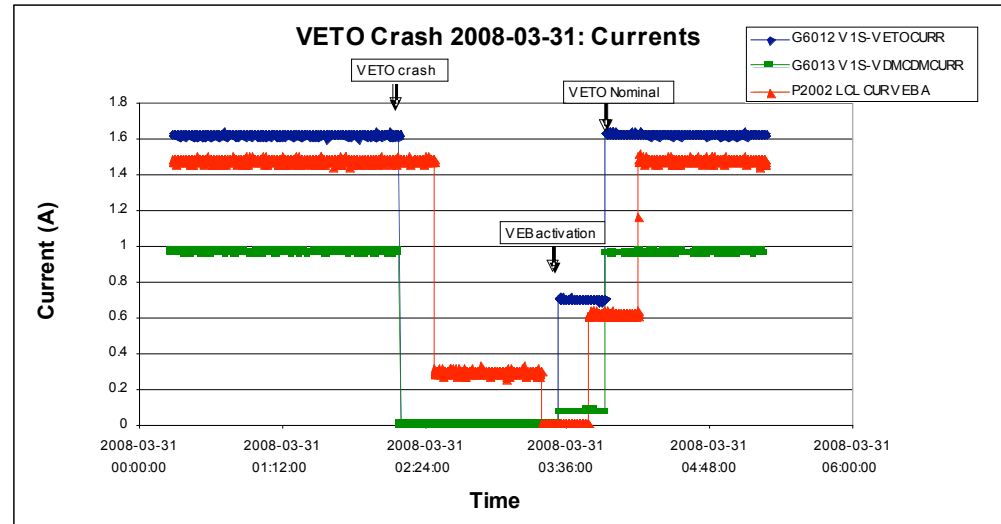




# IBIS: Veto Crash

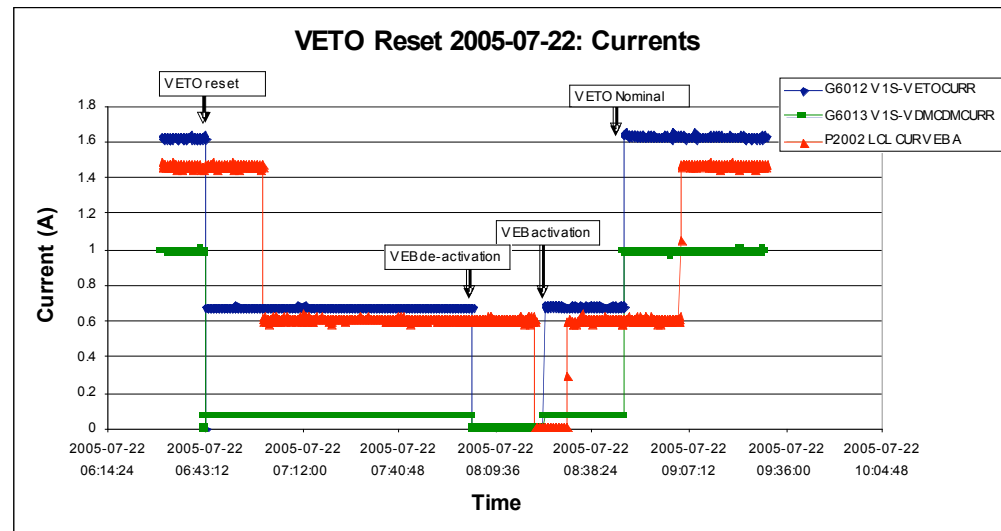
## Symptoms 2008-03-31

- All VDM statuses: TM G6014-G6029 = OFF
- CDM01 status: TM G6031 = OFF (CDM02 also OFF as nominal)
- VDM and CDM High Voltages: TM G6035-G6052 = 0 raw
- VETO bottom, lateral and calibration counters: TM G6061-G6063 = 0



## Symptoms 2005-07-22

- All VDM statuses: TM G6014-G6029 = ON
- CDM01 status: TM G6031 = ON (CDM02 also ON as per )
- VDM and CDM High Voltages: TM G6035-G6052 = 0 raw
- VETO bottom, lateral and calibration counters: TM G6061-G6063 = 0

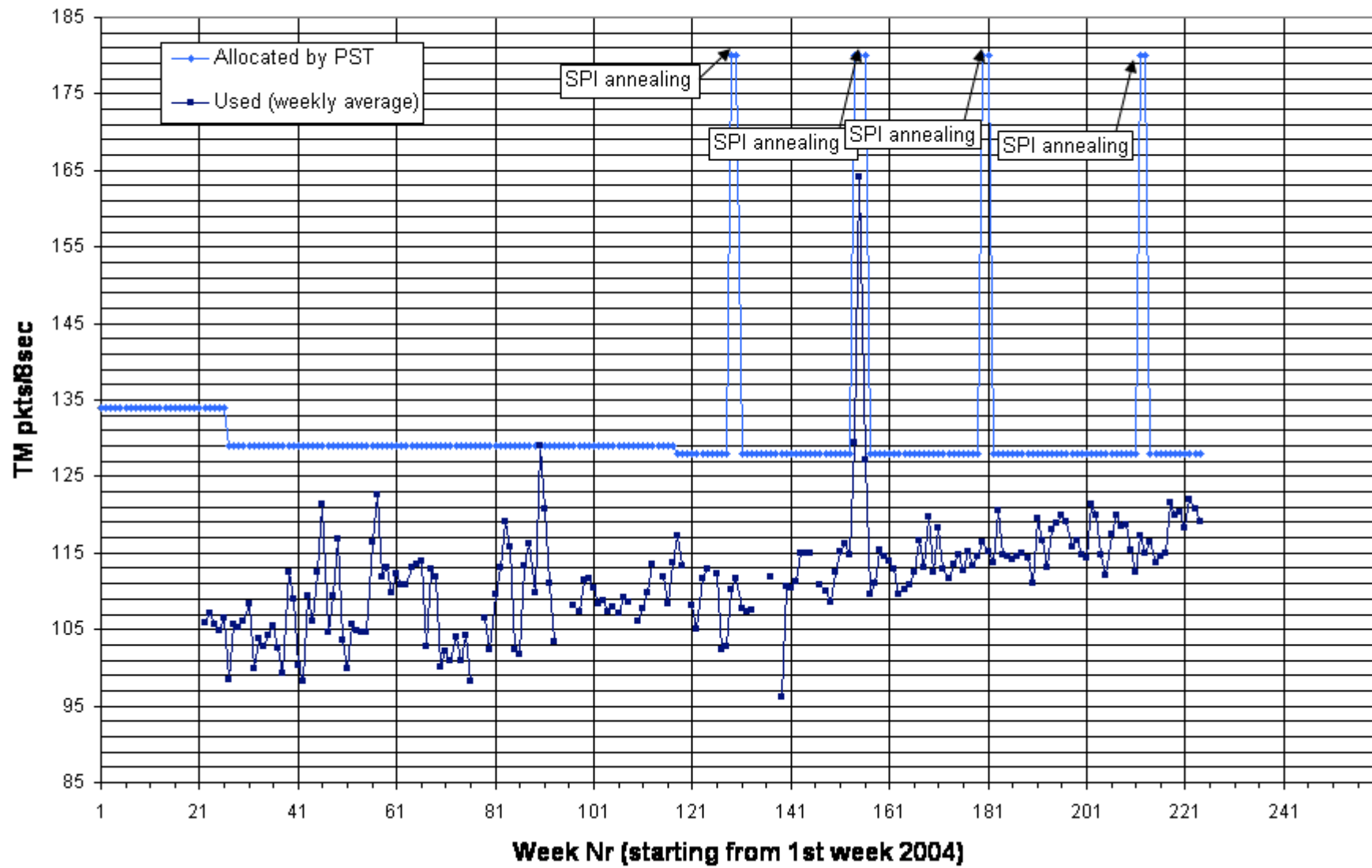


24/04/2008

Integral Operations Coordination  
Group Meeting #01



### IBIS TM Bandwidth Occupation in Science Mode



24/04/2008

Integral Operations Coordination  
Group Meeting #01

