

ISDC status report



Volker Beckmann

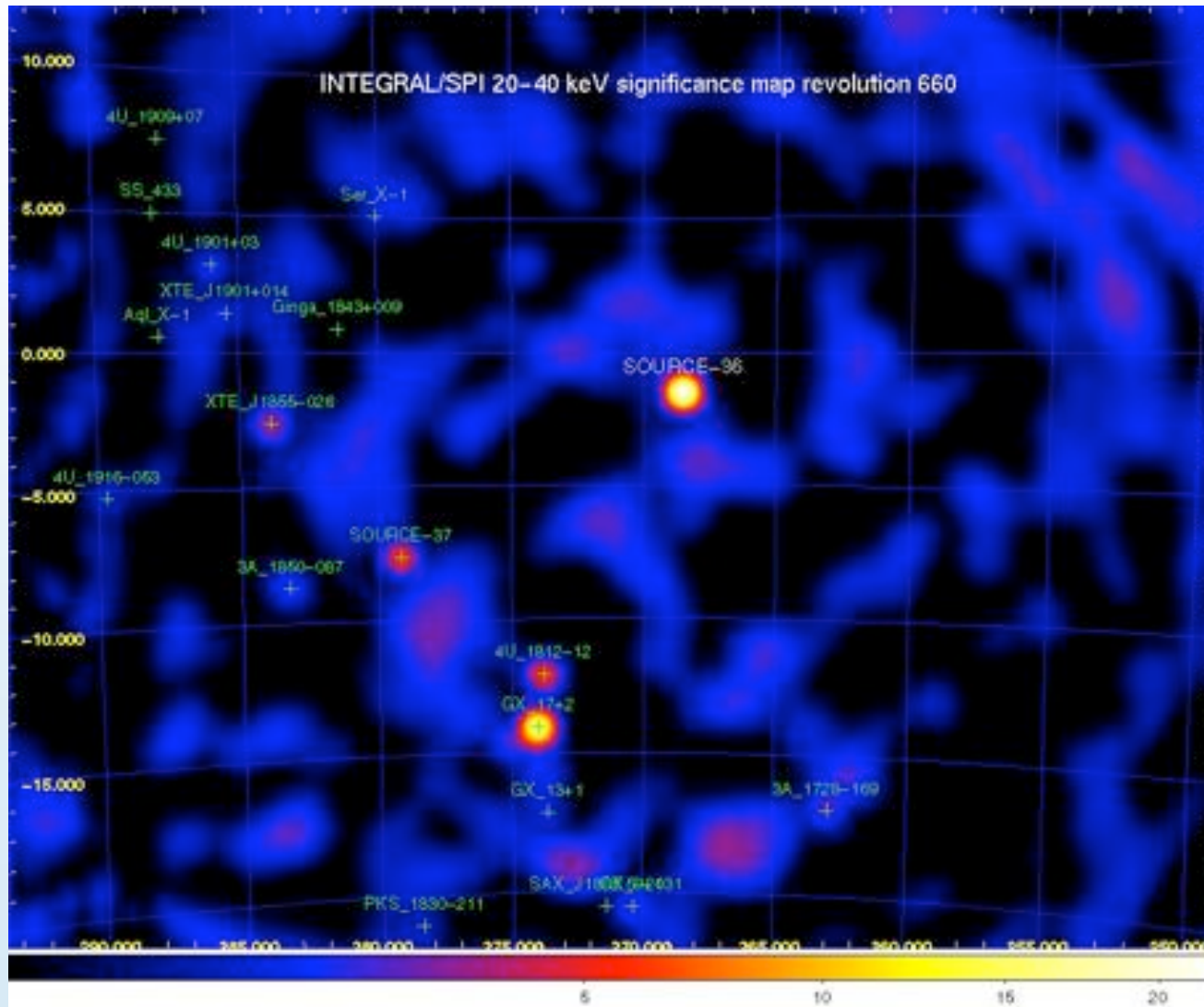
ISDC Data Centre for Astrophysics,
Observatoire de Genève



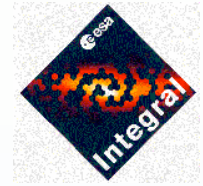
IOCG meeting at ESOC, April 24, 2008



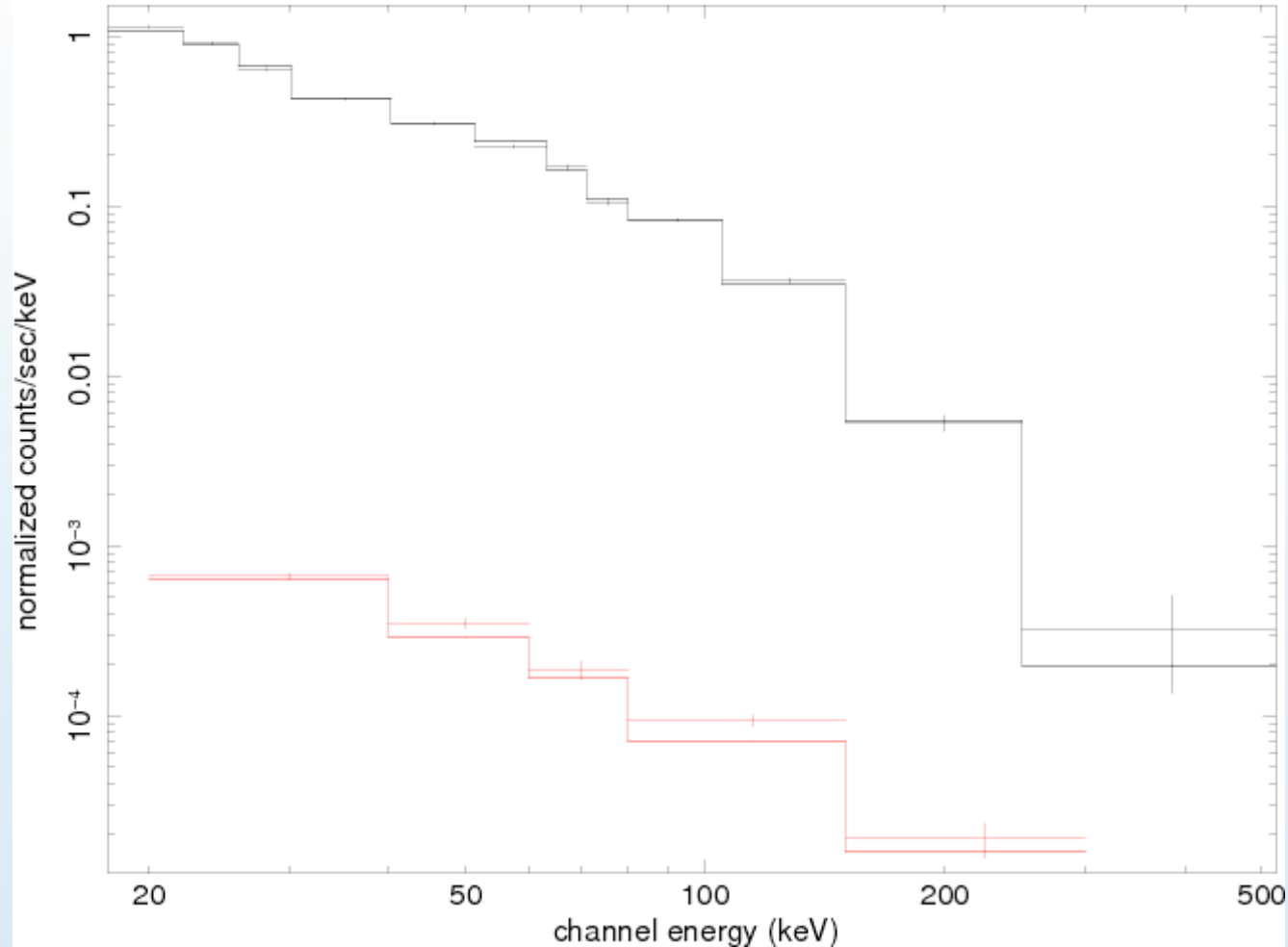
- New SPI decompression installed, IASW 4.3.4
- Reprocessing / time correlation
- High level data archive
- Manpower at ISDC



IOCG meeting, April 24, 2008



SWIFT J1753.5-0127 INTEGRAL IBIS/ISGRI (top) and SPI (bottom) spectrum rev. 660
compTT model fit



- Reprocessing needed (rev_3)
- SPI event energy entries
- Time correlation
- Ongoing improvement of time correlation (MOC, SRON, ISDC)
- Once available, reprocessing will take ~3 months
- End of 2008



- In what format should the data be provided?
- Standard fits based format
- Sky pixel archive:
- Per science window
- TSTART, TELAPSE, Exposure time, flux, error in ~15 energy bands
- Software to do mosaics/spectra on the fly (imaging tool done, l/c and spectra TBD soon)
- JEM-X and IBIS/ISGRI only

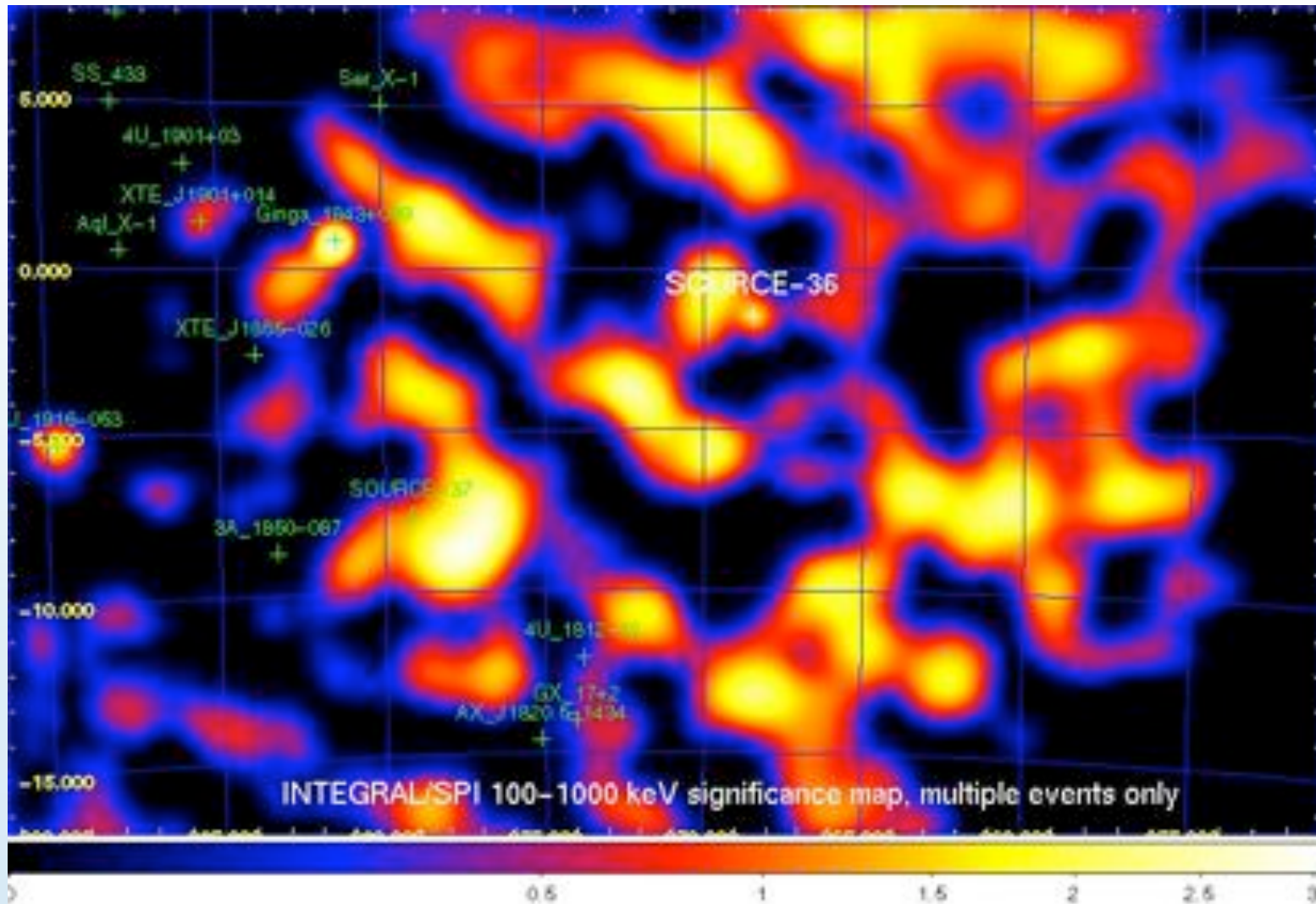
- Ingo Kreykenbohm left end of 2007
- Carlo Ferrigno will start August 2008



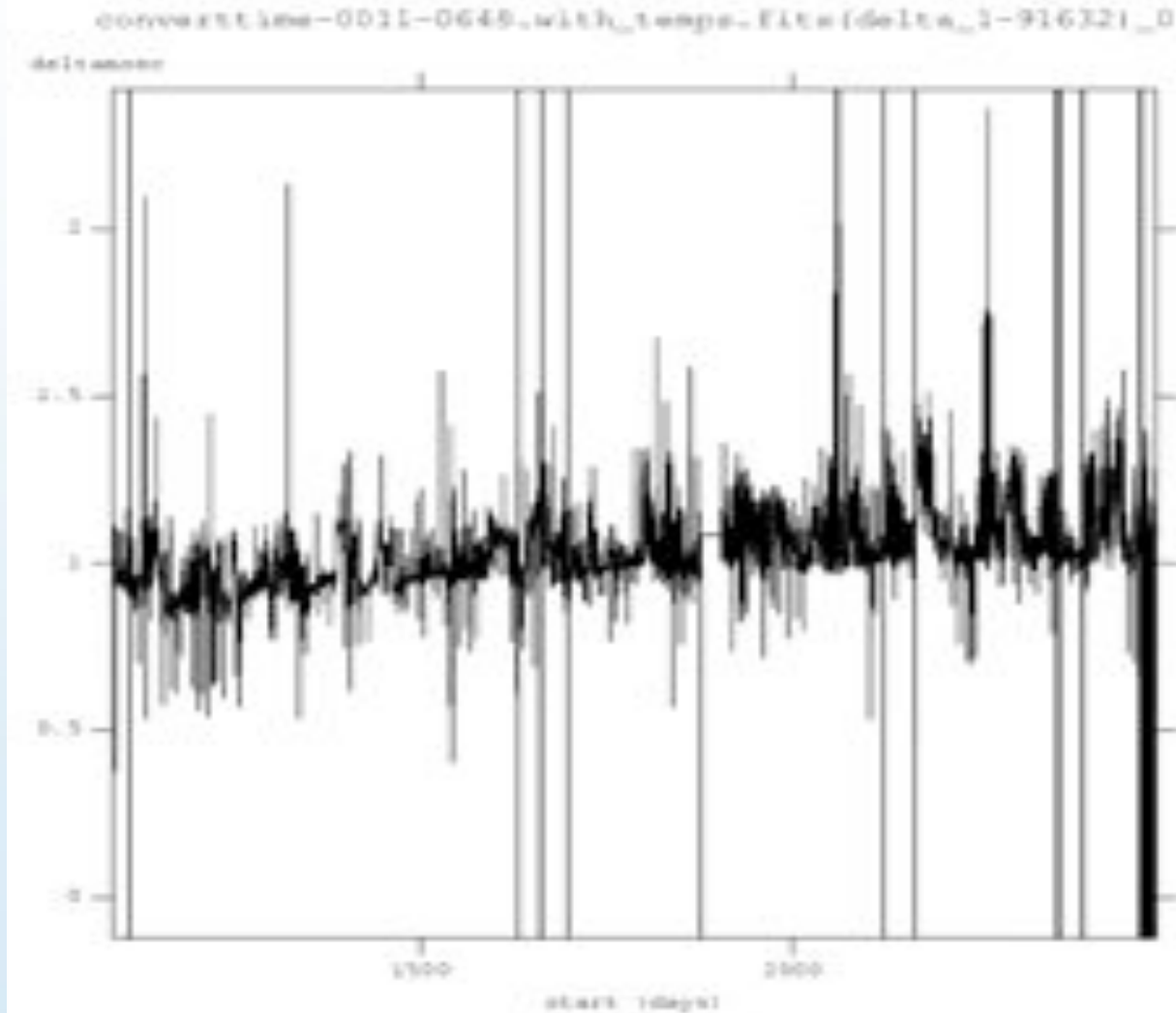
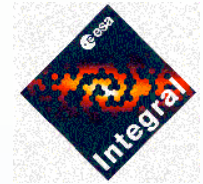
- NASA/GSFC will stop ISDC support due to budget constraints



Additional slides



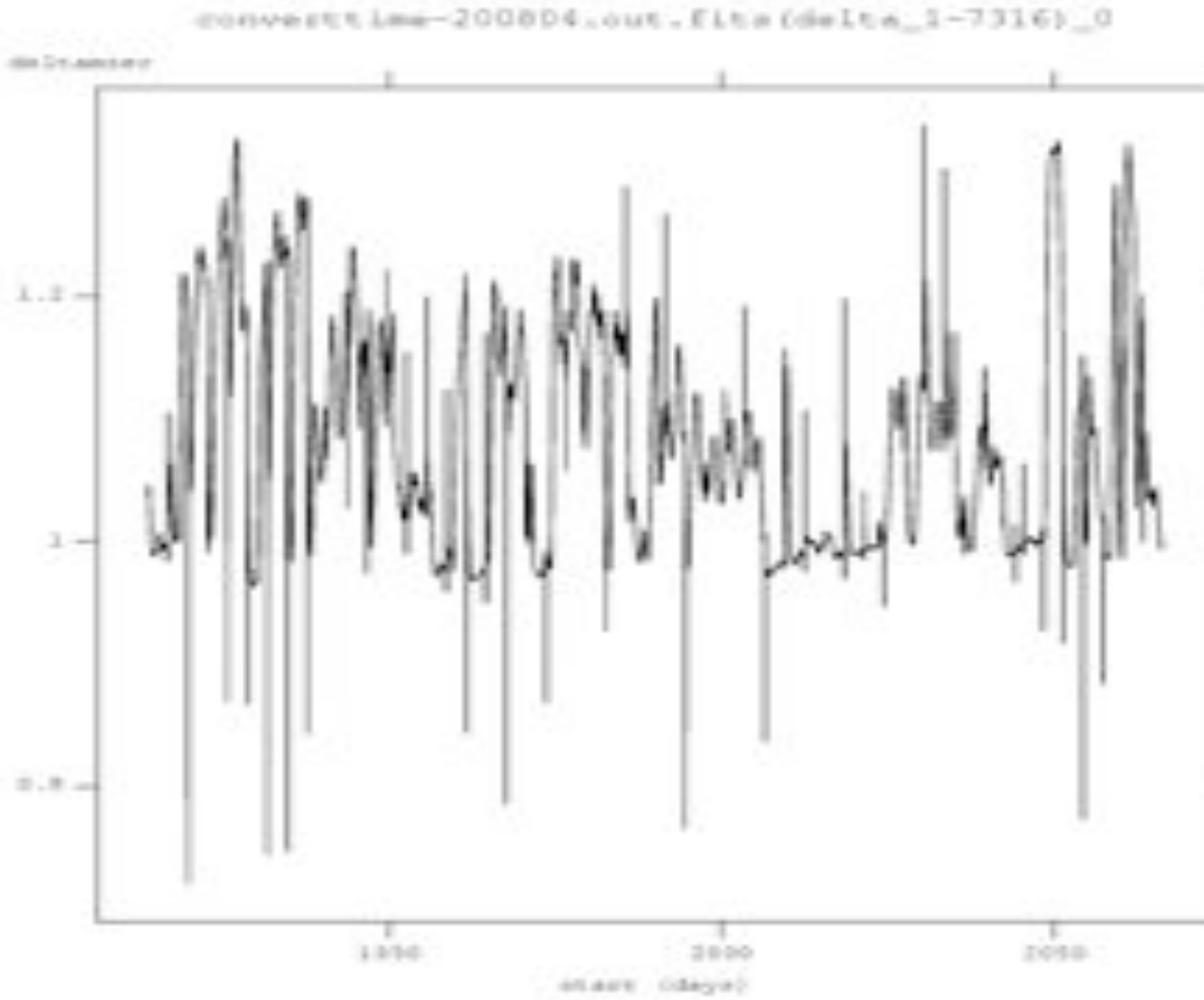
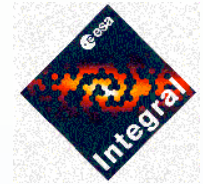
Time correlation



Difference
between
OBT clock
ticks and
time
correlation on
30 minute
time scale



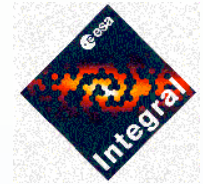
Time correlation



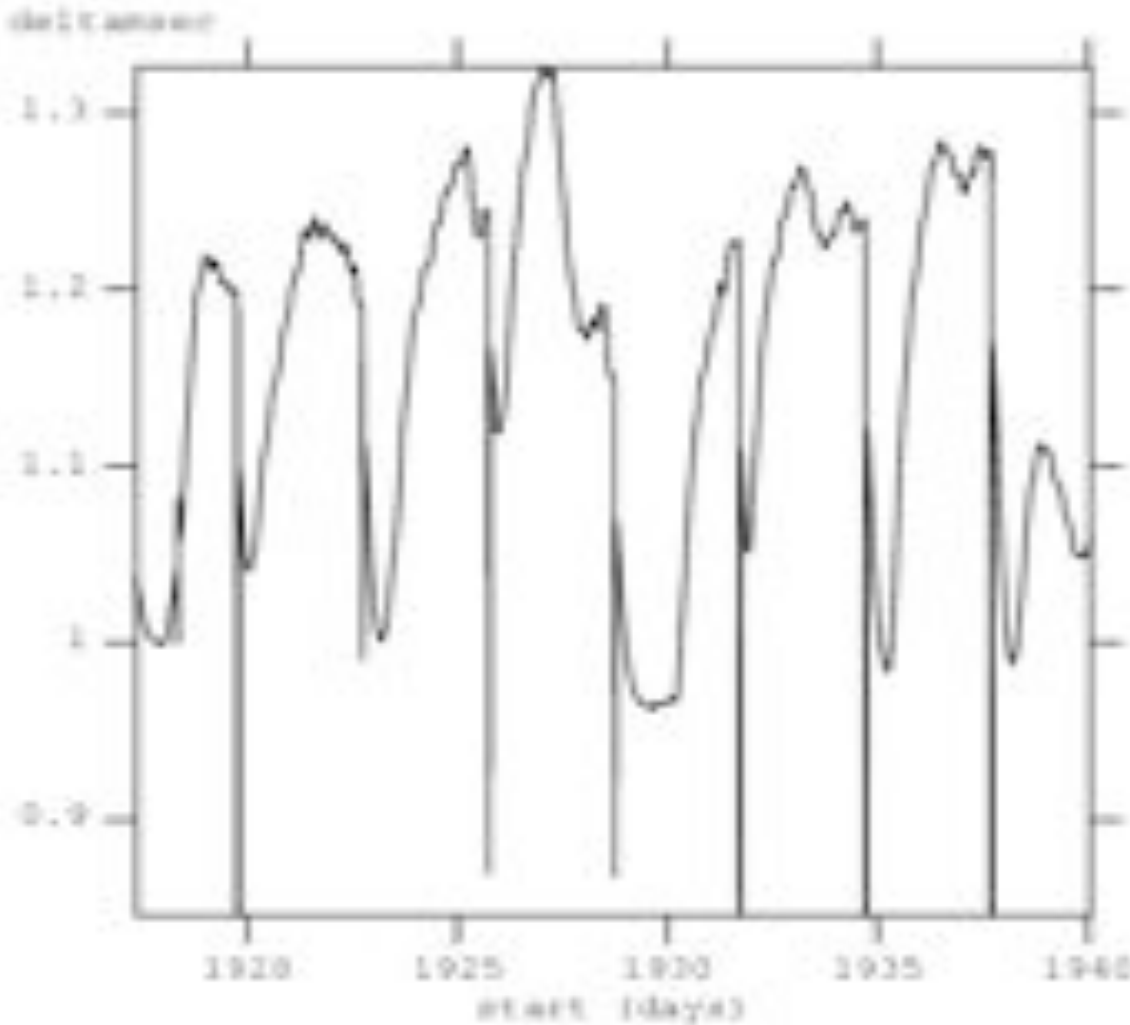
Difference between OBT clock ticks and time correlation on 30 minute time scale



Time correlation



```
converttime-200804.out_2.fits(delta_1-7316)_0
```



Difference between OBT clock ticks and time correlation on 30 minute time scale

