



OMC Status

J. Miguel Mas-Hesse

February 2009



OMC status and operations



- No operational anomalies
 - Trigger mode again successfully tested
- OMC Status
 - CCD Temperature evolution
 - Flatfield stabilized



OMC operations: trigger mode



- On January 29th OMC entered trigger mode due to a false GRB alarm (it resulted to be a SGR flaring while the S/C attitude was not yet stabilized).
- OMC started imaging the field some tens of seconds after the flare was detected automatically at ISDC.
 - Last previous false alarm in April 2008.
- Still waiting for another real GRB within OMC FoV.

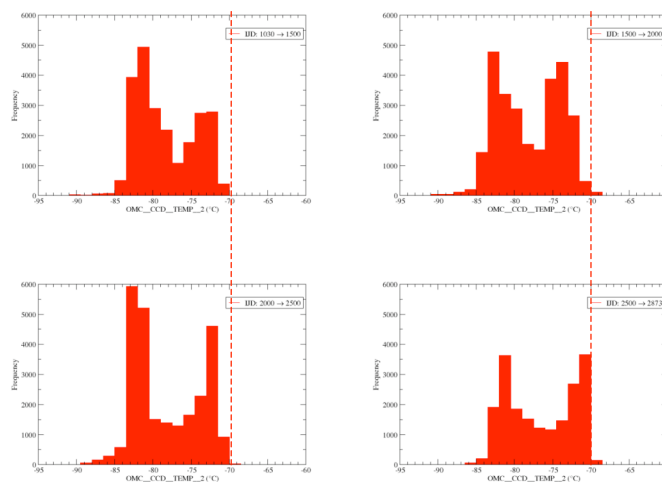
February 2009

J. Miguel Mas-Hesse

3



OMC CCD temperature evolution

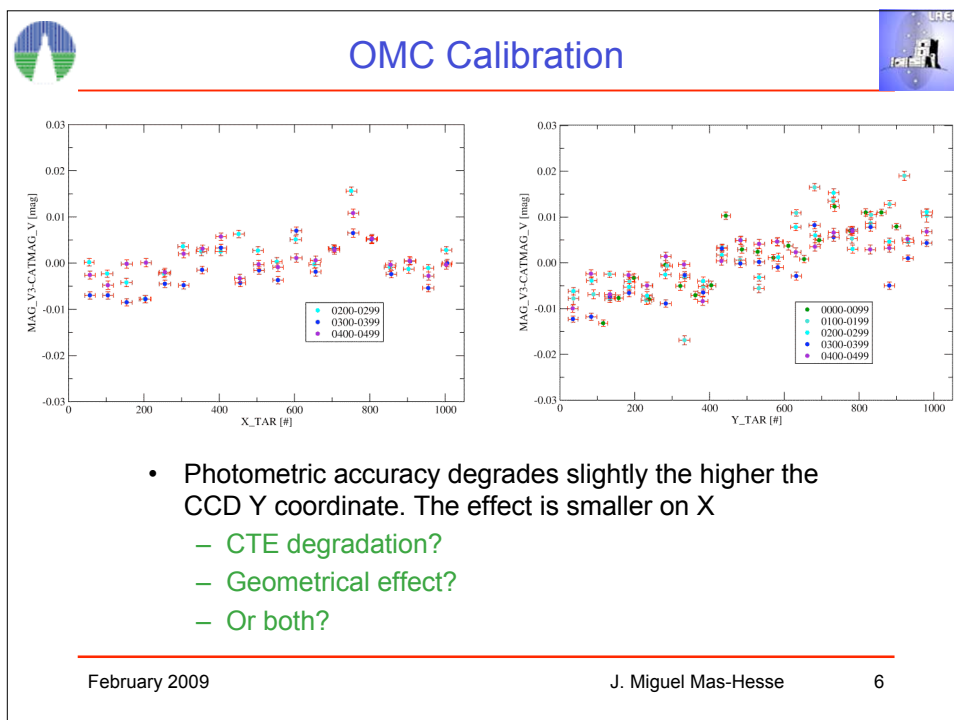
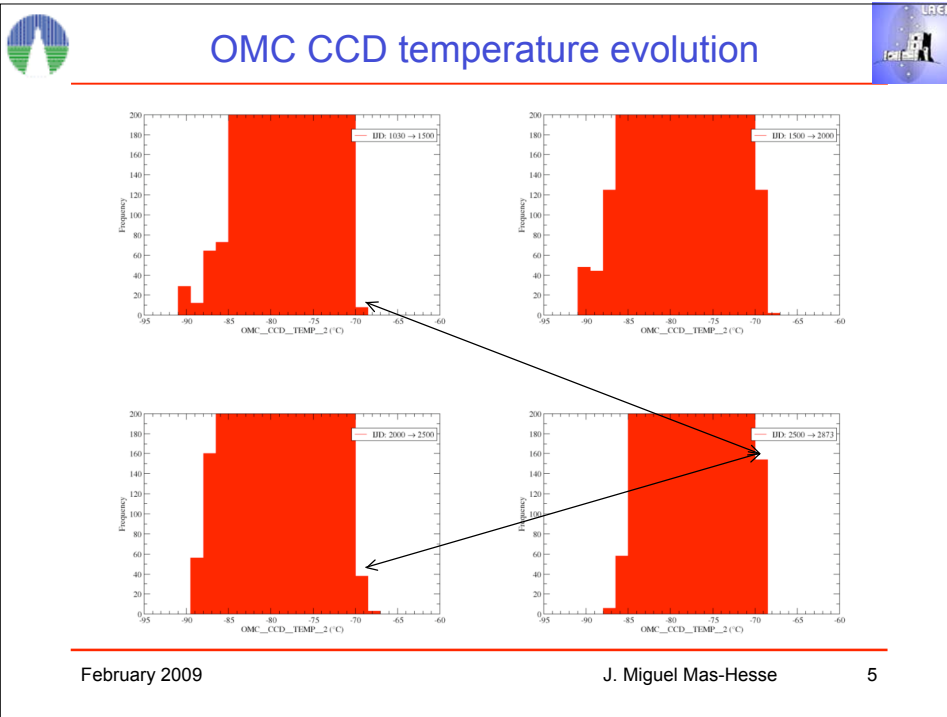


The temperature seems to have increased slightly (1-2 C) in the hot case during last year.

February 2009

J. Miguel Mas-Hesse

4

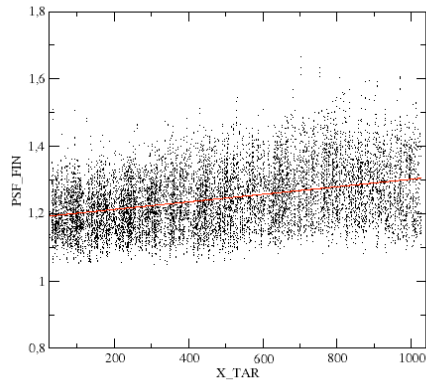




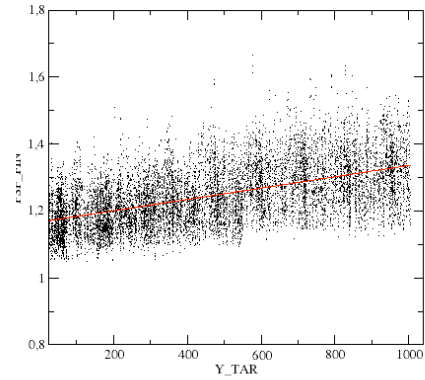
OMC Calibration



Rev 0441-0450



Rev 0441-0450



- The PSF degrades also to high X and Y positions on the CCD. In principle, it is attributed to a slight inclination of the CCD.

February 2009

J. Miguel Mas-Hesse

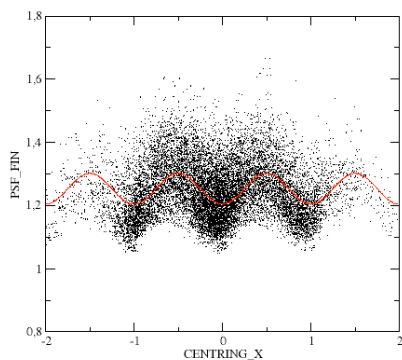
7



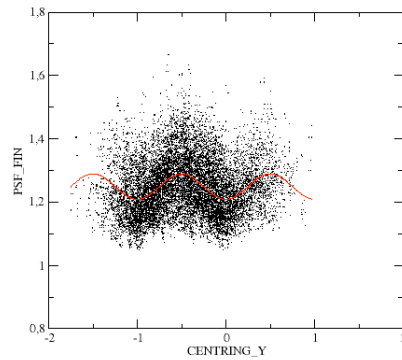
OMC Calibration



Rev 0441-0450



Rev 0441-0450



- There is an additional effect due to the undersampling of the PSF. The effective PSF depends slightly on the centring of the source on a pixel

February 2009

J. Miguel Mas-Hesse

8



OMC Calibration



- A correction to these effects has been incorporated to the calibration SW within forthcoming OSA 8.