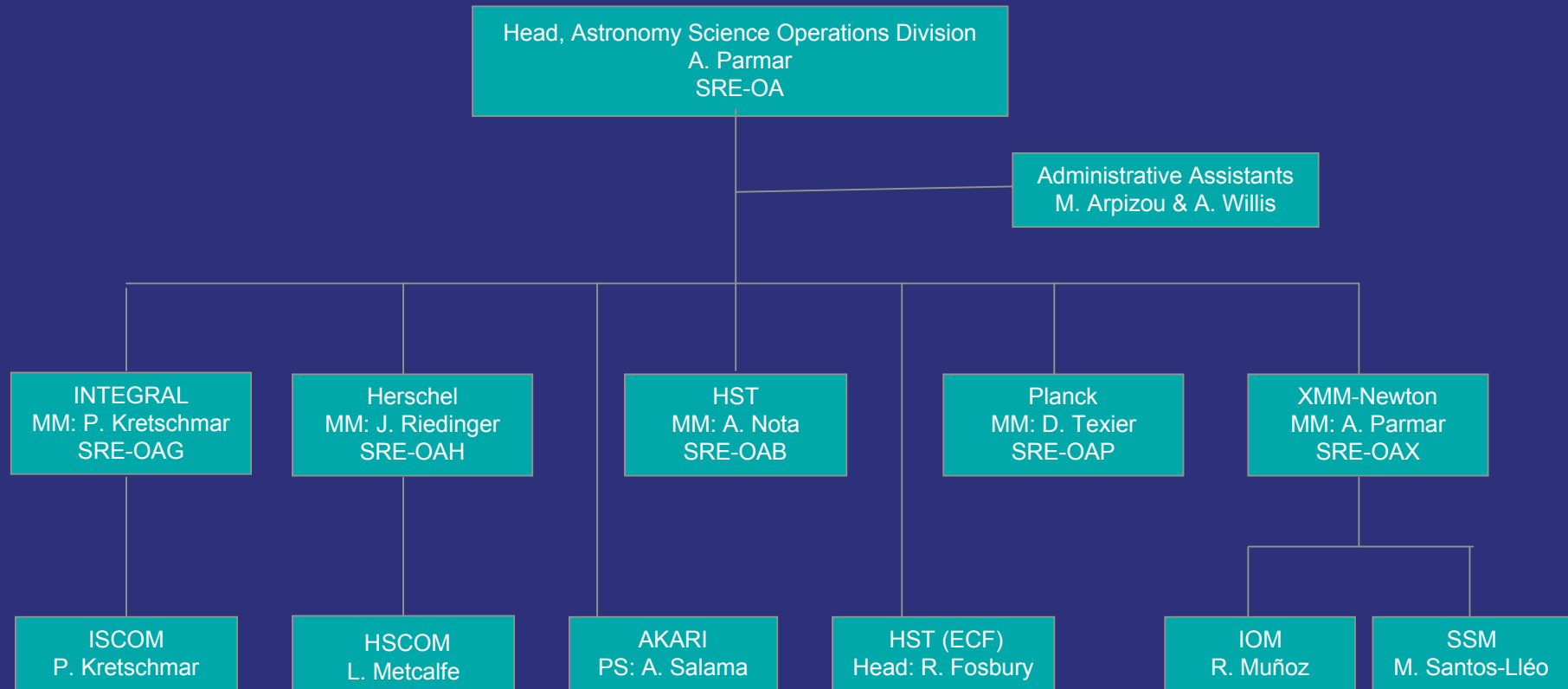


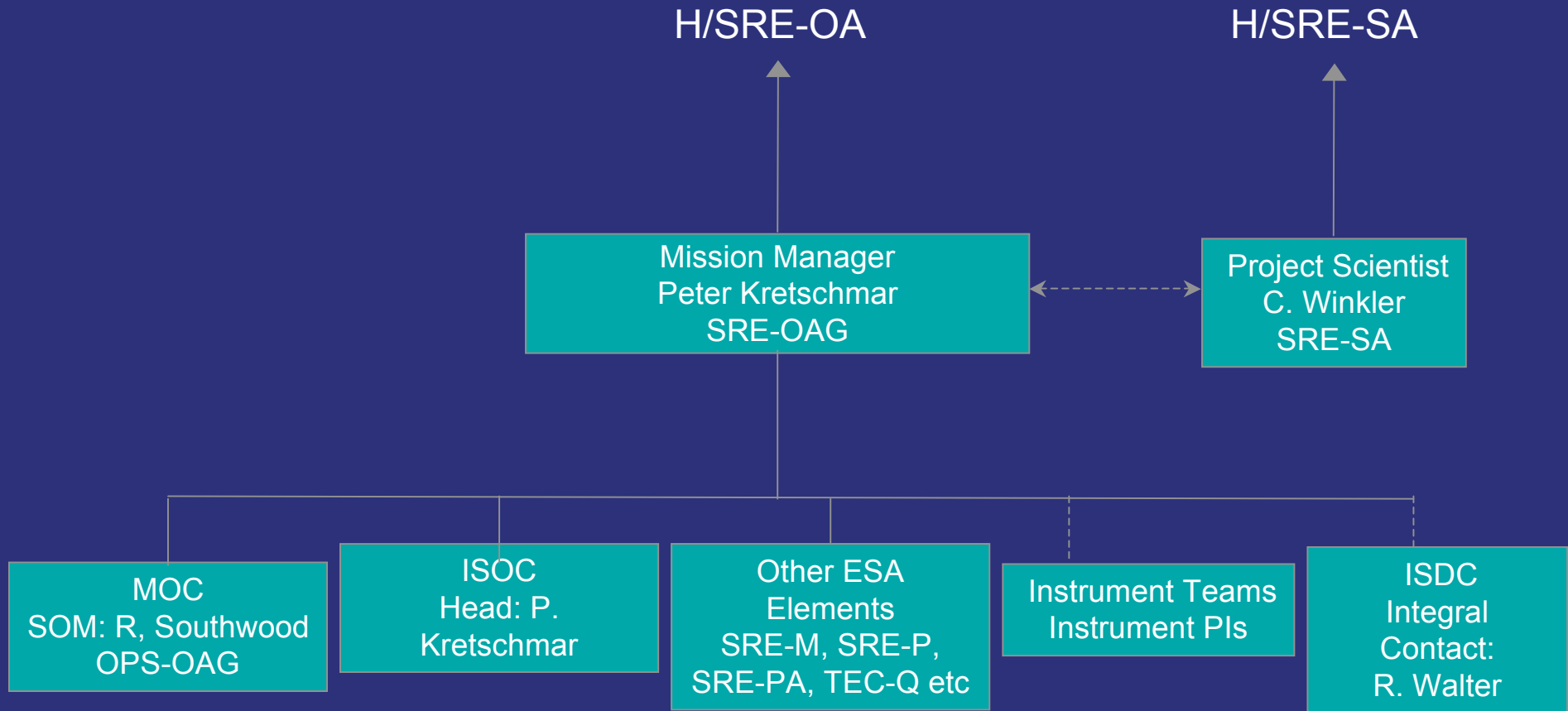
Management of the Integral Mission

Prepared by Arvind Parmar
Head, Astronomy Science Operations Division
IUG 08, ESTEC
10 December 2009

- Arvind Parmar was appointed Head of the Astronomy Science Operations Division (SRE-OA) on 1 July 2009 and has moved to ESAC.
- SRE-OA is responsible for the the conduct of science operations and overall management of ESA's astronomy and fundamental physics missions following successful commissioning.
- Currently: Integral, XMM-Newton, Planck and Herschel operations are in SRE-OA which is also responsible for the European contributions to HST and Akari.



- Arvind was appointed Integral Mission Manager in December 2002 after a short period being acting Project Scientist.
- Following appointment as H/SRE-OA, Arvind has decided to step down as Mission Manager and asked Peter Kretschmar to take his place.
- Peter has agreed and has been appointed Integral Mission Manager from 10 October 2009. He will combine this with his current job as Head of the ISOC.
- Arvind would like to thank Peter for taking on this extra responsibility. He has every confidence that Peter will be a great success in his new role and will work closely with him to ensure a smooth transition.
- Norbert Schartel (XMM-Newton Project Scientist) will take over from Peter as Deputy Integral Project Scientist combining both roles.



- Overall responsibility for all aspects of Integral science operations assigned to the Mission Manager by the Head of Division;
- Organisation and overall management of the teams and staff assigned to the mission as well as coordination of the support from other Directorate elements;
- Interfacing to D/OPS personnel regarding the delegated responsibility for the Mission Operations Centre (MOC);
- Overall project planning (scientific, technical, financial and programmatic) including maintenance of the project CaC and planning for any mission extensions;
- Full responsibility for the project budget including delegation to H/SRE-SA of those elements necessary to support the Project Scientist in his activities;
- Liaising with the external providers of inputs to operations to address the operational elements of running the Integral mission;
- Ensuring that information on the project's experiences ("lessons learnt") is appropriately made available to future projects.

- Maximise the scientific return of Integral within programmatic constraints
- Advise the Integral Mission Manager on all scientific aspects of the observatory
- Ensure that Integral maintains the characteristics of an observatory satisfying the interests of the scientific community at large
- Issue regular Announcements of Opportunity (AO) for Integral observing time and monitor their correct and timely implementation
- Set-up, organize and act as the secretary of the Integral Time Allocation Committee (TAC) and monitor the selection of a scientifically optimal observing program
- Monitor the correct and timely implementation of the observing program by ISOC & MOC
- On behalf of the TAC, accept or otherwise requests for ToO and monitor their implementation
- Set-up, organize and act as secretary of the Integral Users' Group (IUG)
- Upon advice from the IUG, define the scientific priorities on all operational aspects of the mission, including mission planning, instrument set-up, calibration, data-processing, archiving and distribution, and monitor their correct and timely implementation
- In consultation with the IUG, promote Integral within the scientific community by means of presentations at conferences, symposia, workshops etc and promote Integral to the general public by proposing press-releases, web-stories etc and monitoring their correct implementation
- Provide regular reporting to the ESA Advisory Structure on all scientific aspects of Integral