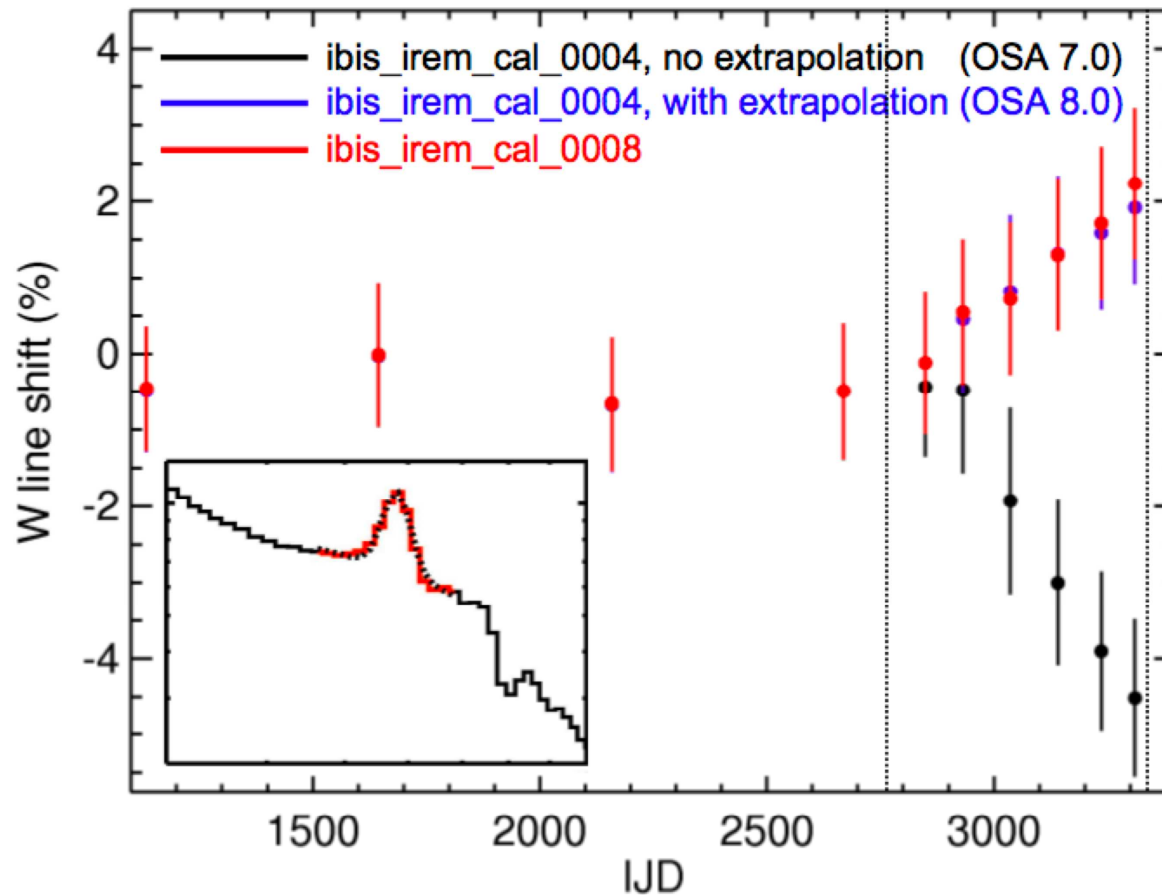


# ISGRI energy drift

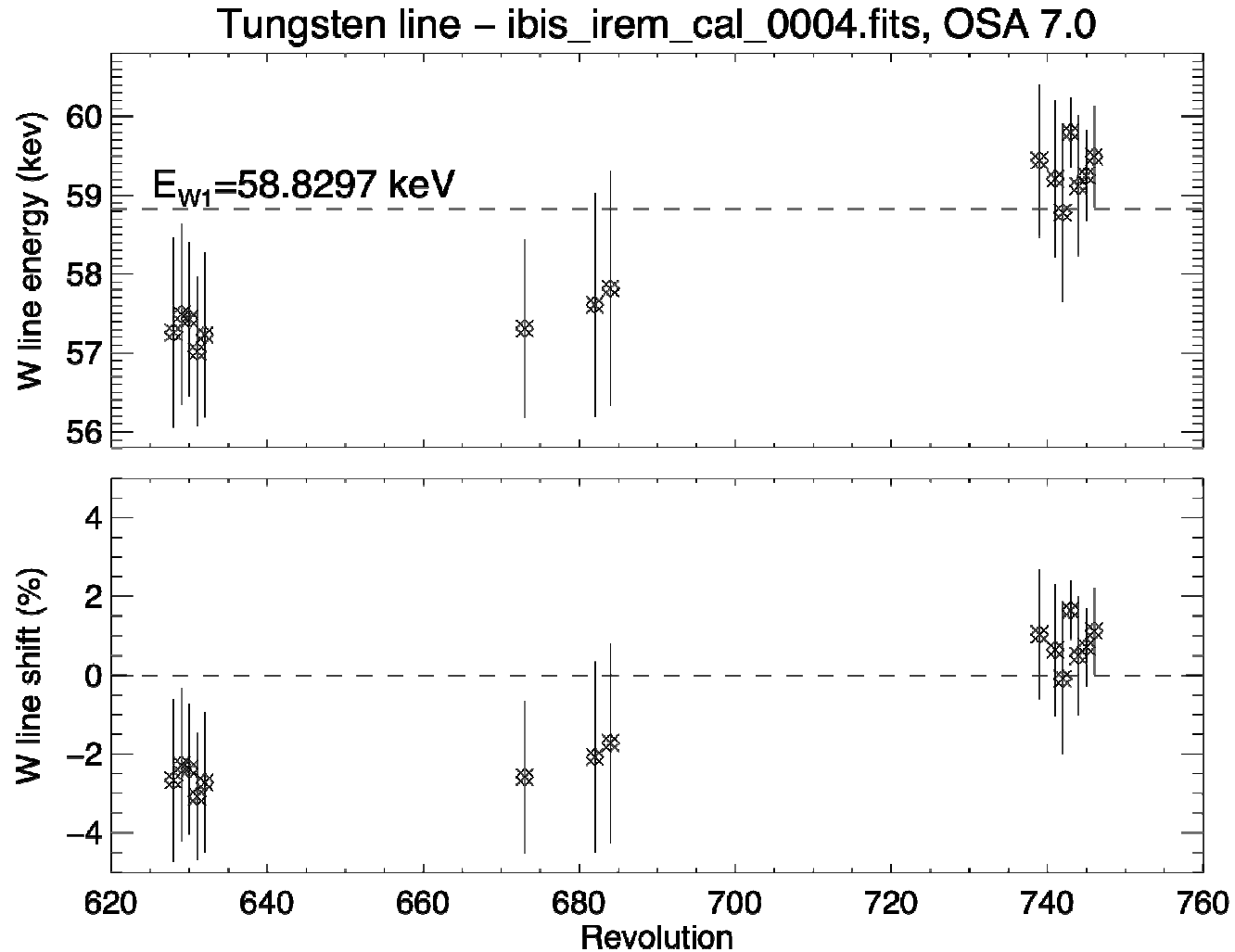
I. Caballero & F. Lebrun

# ISGRI energy drift: known effect since $\sim$ IJD 2750 (ibis\_irem\_cal\_0004).

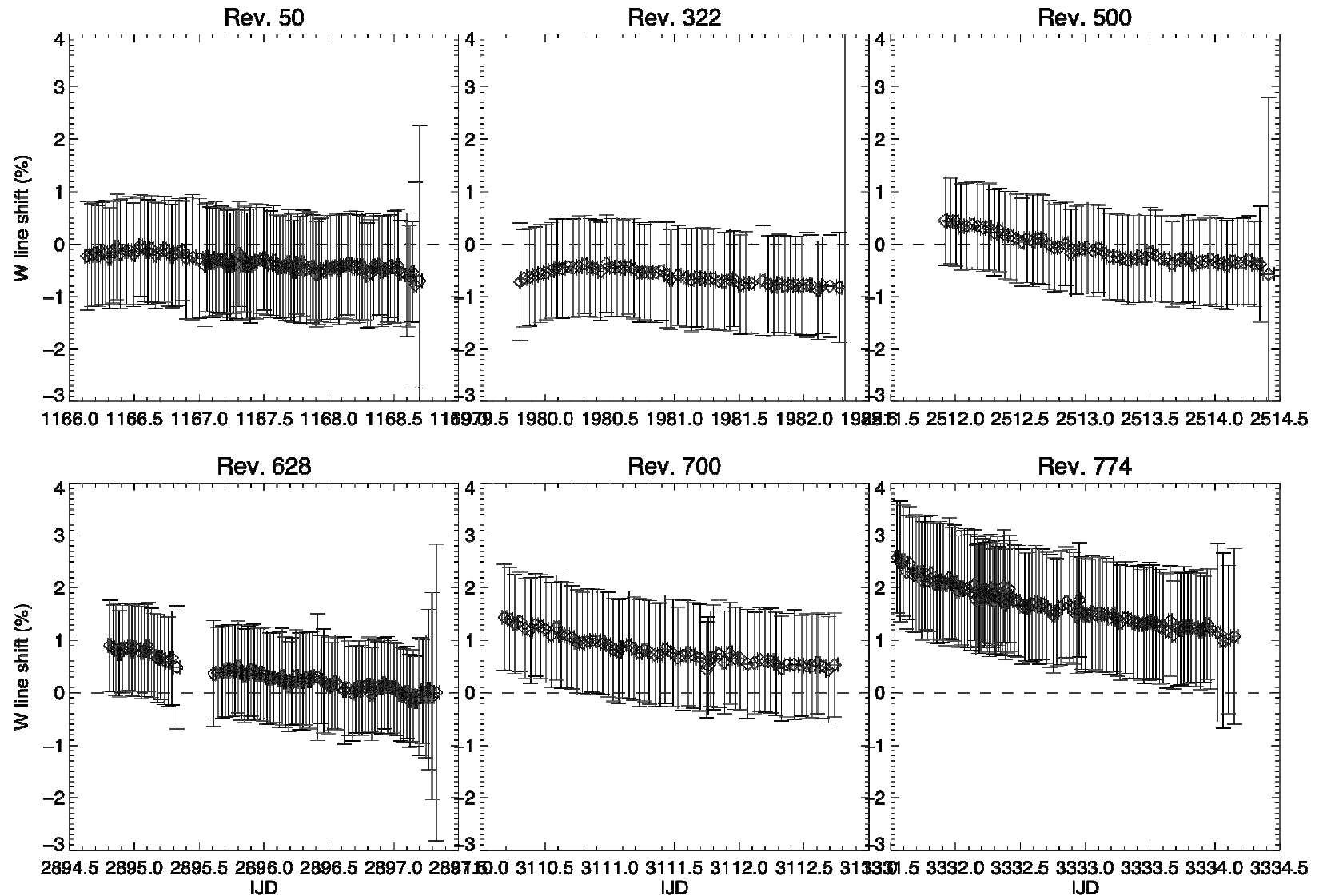
59 keV Walpha line over-corrected with up-to-date ibis\_irem\_cal\_0008  
Matthieu Renaud, ESTEC 27<sup>th</sup> March 2009



# Cygnus X-1 observations rev. 628-794: Walpha line (Diana Marcu, K.Pottschmidt)

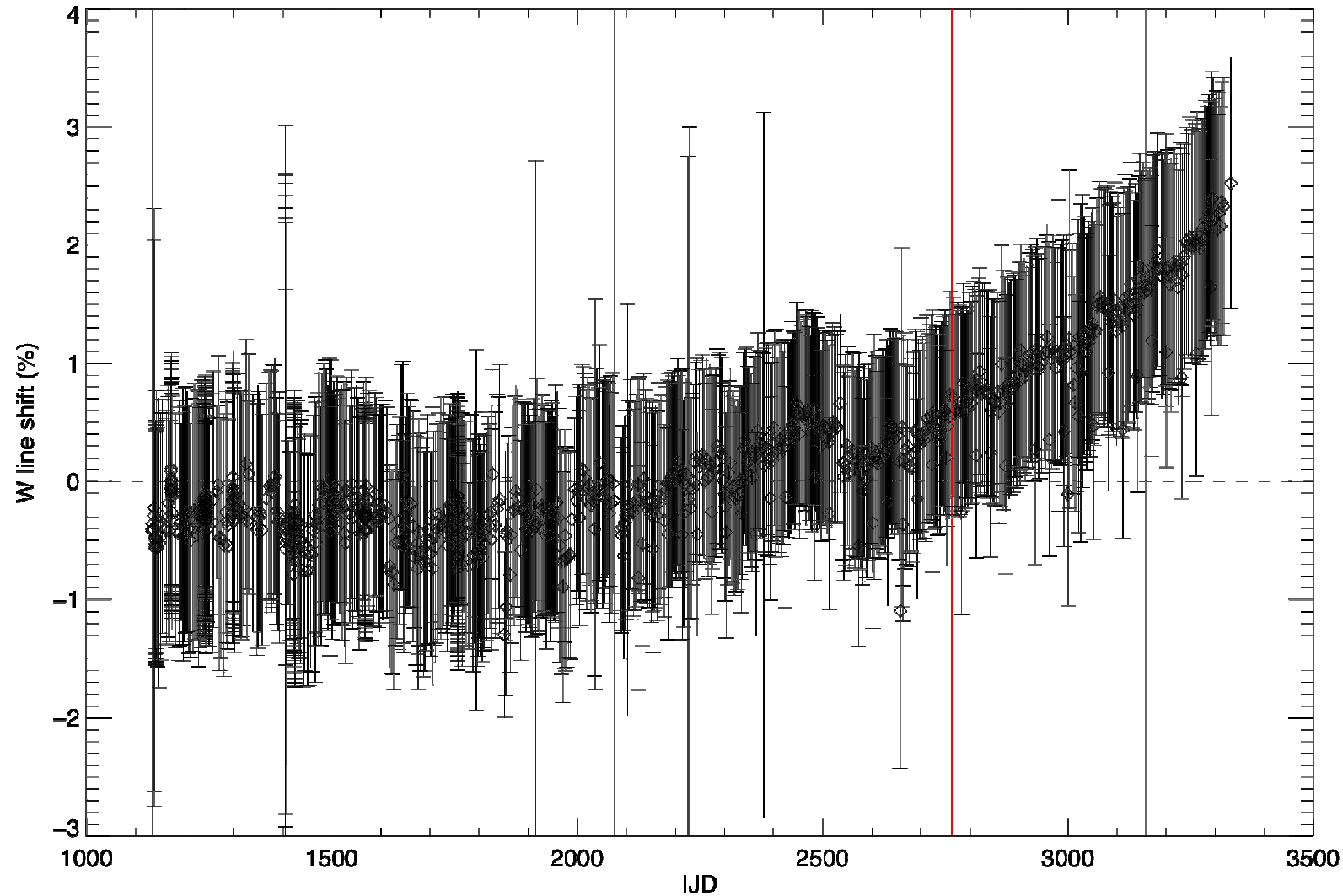


# W line evolution per revolution



# W line all mission (to update with new Cubes)

All mission – scw \*00040010



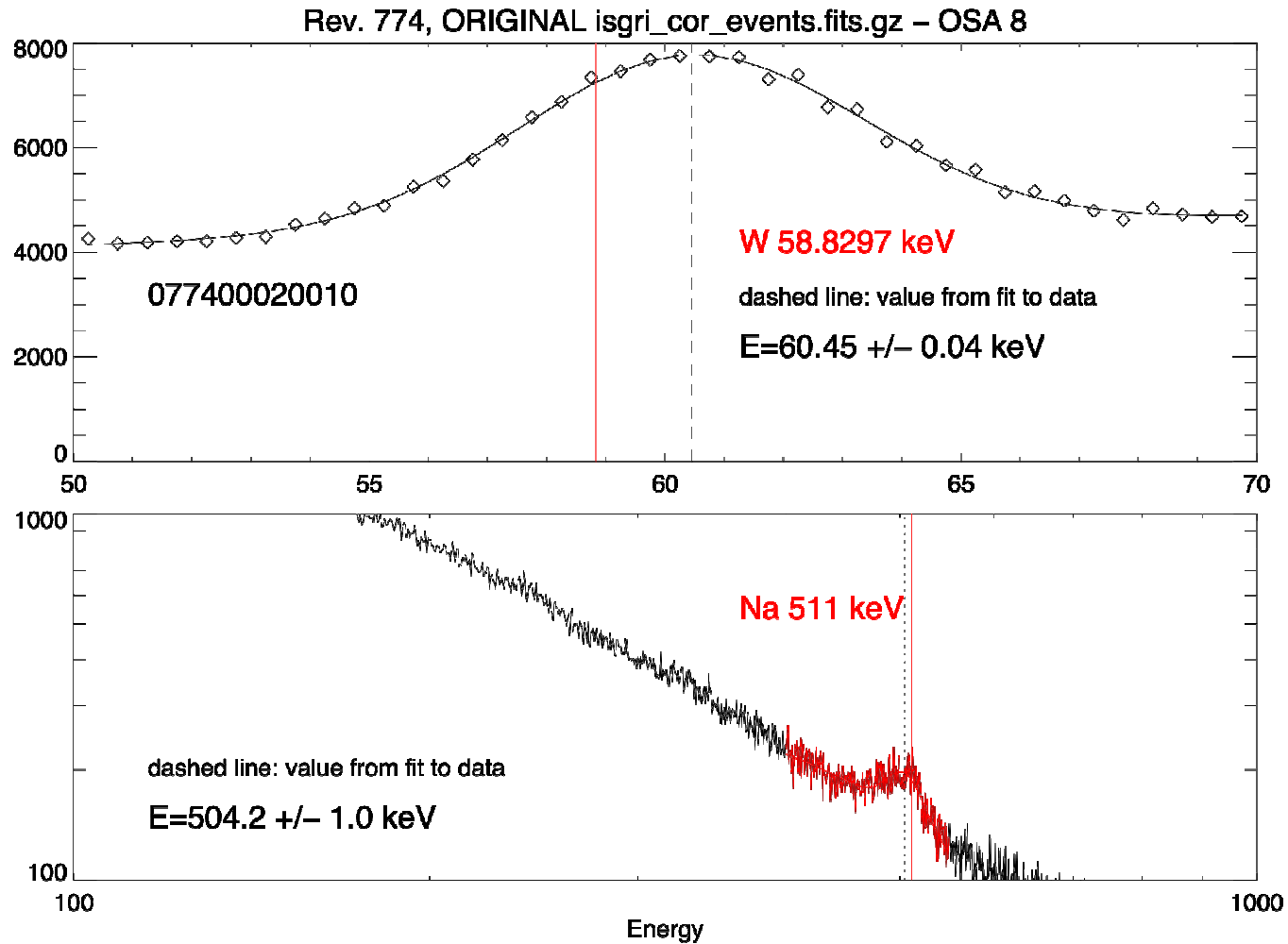
# INMEDIATE SOLUTION – ONGOING WORK:

## Correction of event files

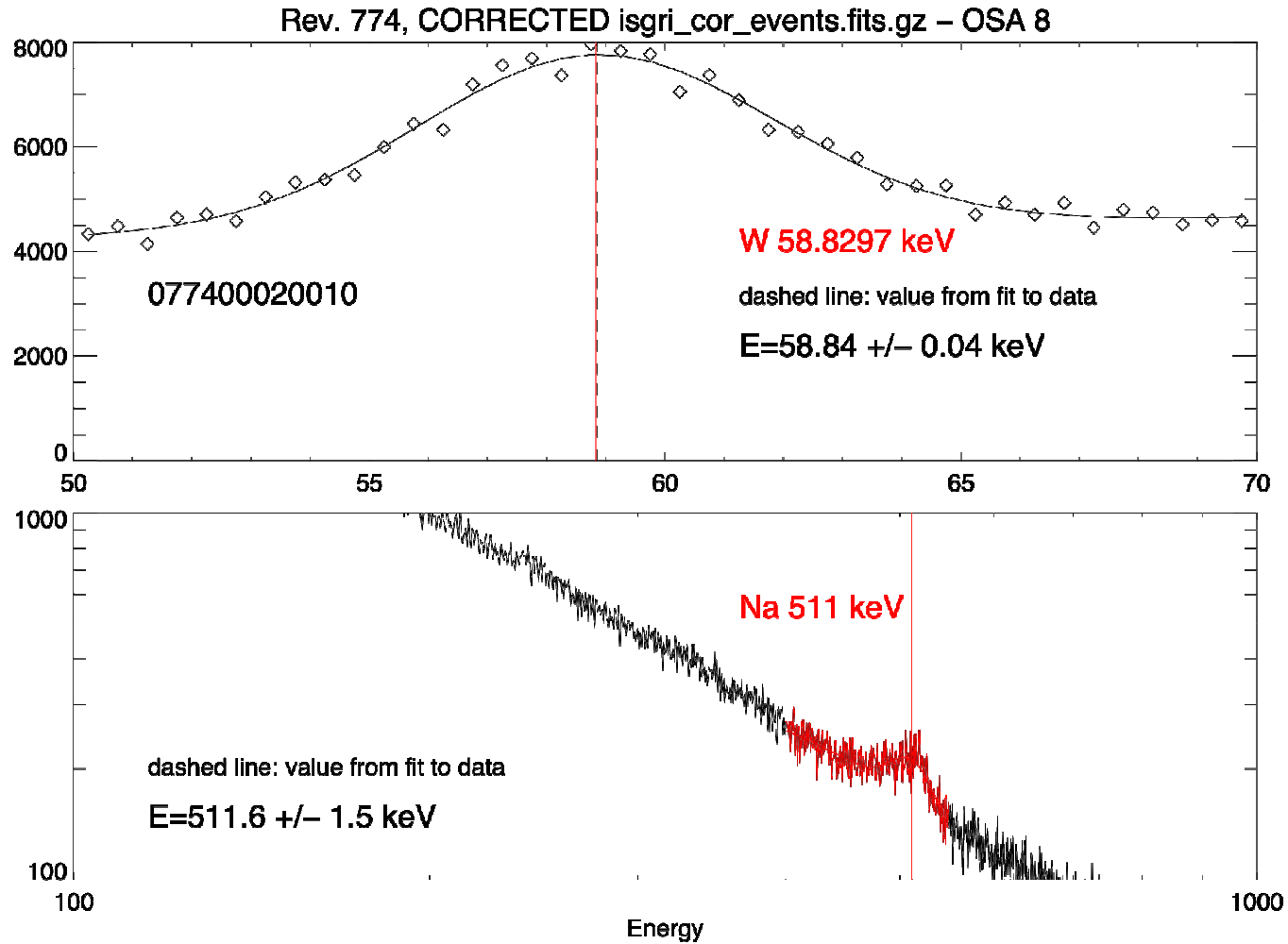
`isgri_cor_events.fits`

- Gain and offset re-calculated for all ScWs, correction of event files for every revolution
- Correction will be implemented in OSA, patch to be included in COR step of *ibis\_science\_analysis*, in *ibis\_isgr\_energy*
- To be delivered with next OSA release together with ghost-busters & corr. NOMEX

# Example rev. 774: Original events



# Example rev. 774: Corrected events

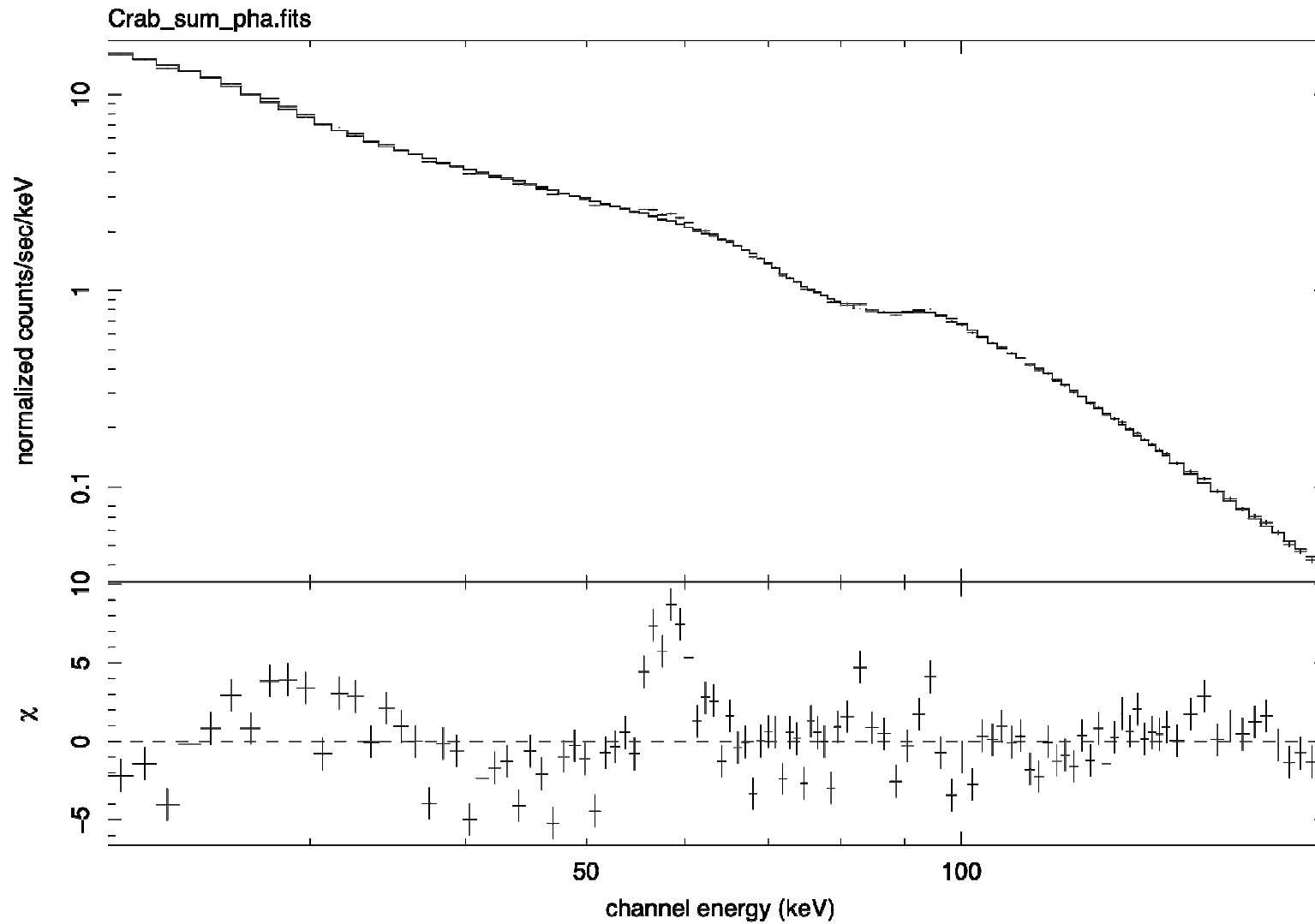




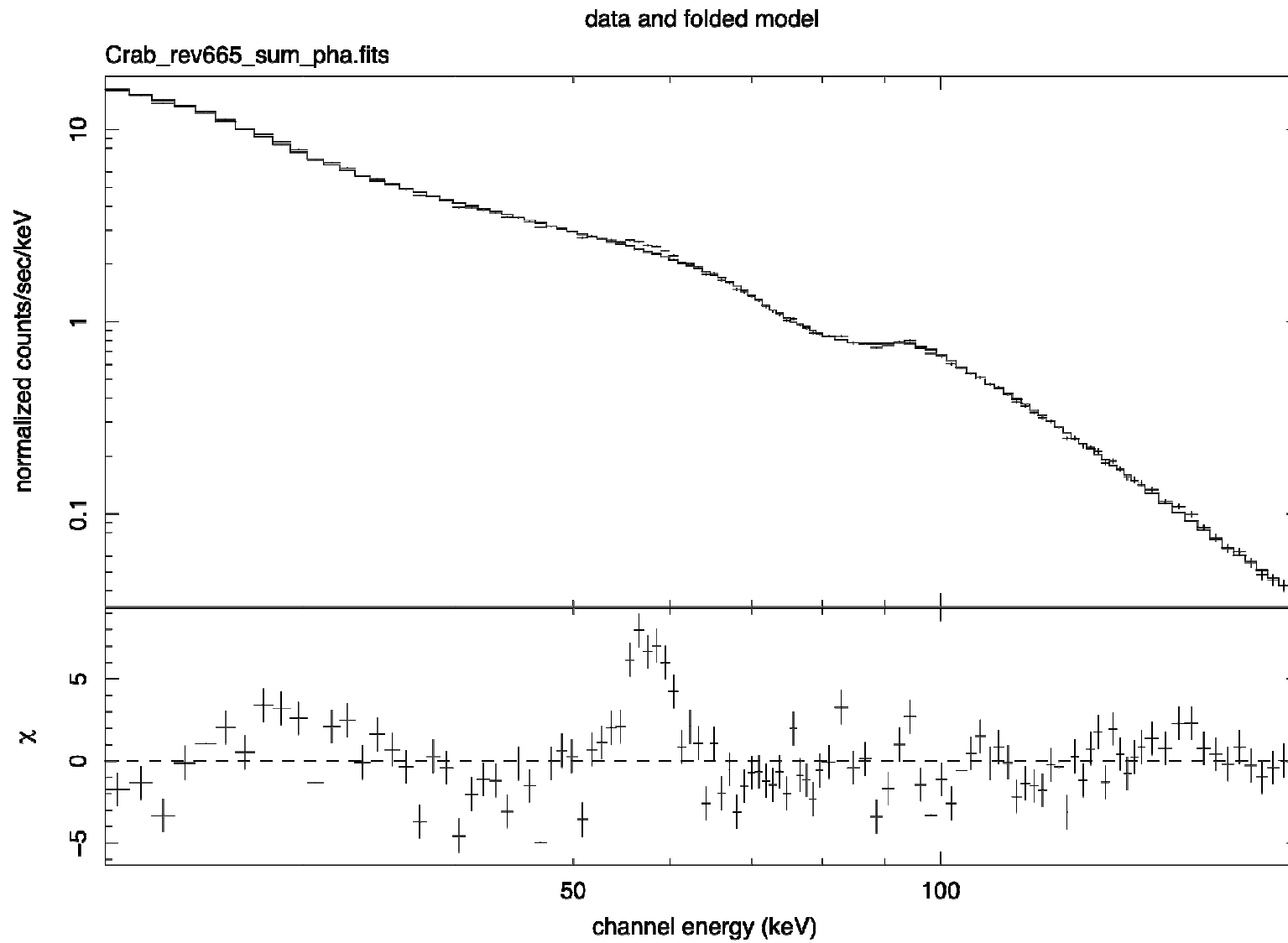
# Crab spectrum

## rev. 665-774

data and folded model



# Crab rev. 665



# After spectral drift correction

data and folded model

Crab\_corr\_events\_good\_sum\_pha.fits Crab\_corr\_events\_sum\_pha.fits ~/calibration/O

