



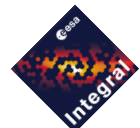
Integral

R. Southworth ESA/ESOC
Integral Operations Co-ordination
Meeting (25/3/2011)
MOC and Spacecraft Status

MOC and Spacecraft Status



- FCT
- Satellite Health and Consumables
- Anomalies
- PLM status and Anomalies (extra presentation)
- MOC status
- MOC External Interfaces
- MOC Tools
- MCS Evolution
- Mission Performance



■ Spacecraft Operations Manager

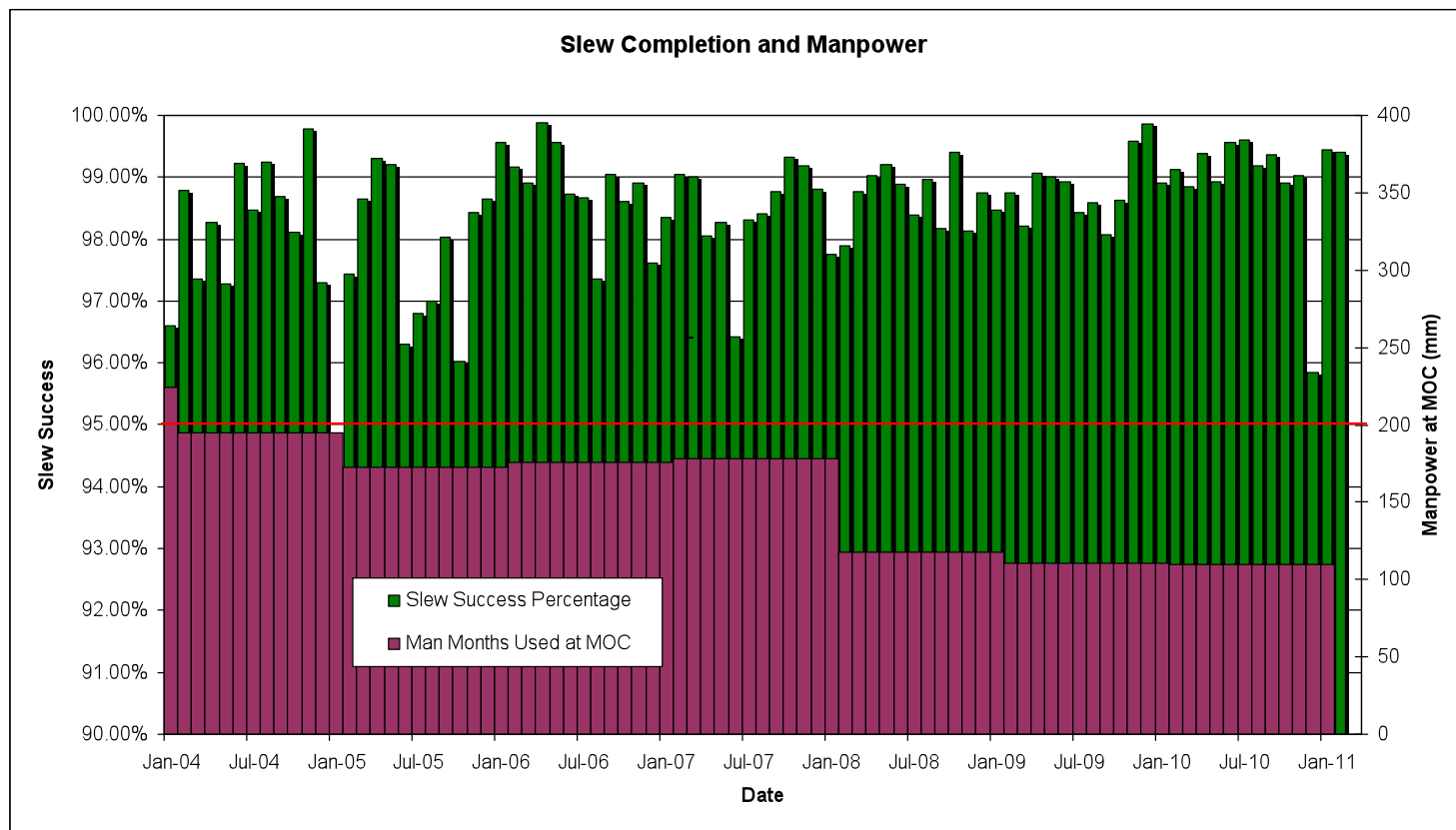
- Richard Southworth
- ESOC ext 3827 (Richard.southworth@esa.int)
- System and SVM Issues+ overall responsibility

■ Flight Control Team

- Carmen Lozano (**AOCS**, *IBIS, Mission planning, OBDH*)
- Mike Walker (**Mission Planning, JEM-X, OMC, IREM**)
- Jutta Huebner will replace Salma Fahmy from 20/4/2011.
- *Frederic Schmidt* (**SPI**, *EPS, OBDH, RFS*)
- Stefano De Padova (MCS, Database, SPACONs)

■ Slews Completed and Manpower Used

- Slew execution is the most complex operation and requires the entire Ground Segment to be working end to end in both directions



- No Significant new Platform Anomalies
- Number of registered (on ground) STR blemish pixels increased from 5 to 8
- Results of calibrations indicate continuous slow evolution
- Transmitters now switched off every perigee to comply with ITU regulations
- No effects of proton belts passage observed except on arrays
 - Arrays to be dealt with under orbital evolution
- Batteries appear healthy – reconditioning #5 in spring 2011.

■ Fuel Consumption

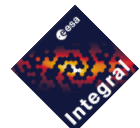
- About 122kg remaining, usage is about 0.6kg / month
- Recent Increase (More and larger Biases – ToOs)

- DCA renovated
 - Shared with XMM and Gaia
- IBIS SVDF installed in ESOC.
- Ground Stations interface is stable no major changes foreseen:
 - Prime: REDU
 - Back up: VIL2, Maspalomas, Weilheim
 - Use of DSN discontinued as of December 2010

MOC External Interfaces



- Interface to ISOC is stable – no changes foreseen, no significant problems.
 - Regular video conferences
- Interface to PIs is good:
 - Regular Contact
 - PI workstations hosted in ESOC



- Interface to ISDC is stable – no changes foreseen, no significant problems.
 - Occasional interruptions in nrt
 - Occasional delays in supplying CDs
 - Can we transfer data as a file?, as is done for ISOC already. Current (configurable) delay is 14 days.
 - Average over last year, including start up and initial problems 18.75 days.
 - **Communications Upgrade to ISDC (Lines + Routers)**

- Following MOC tools are available:
 - TDRS: Web based access to all Housekeeping Telemetry since launch
 - Account needed – contact me
 - Integral / XMM MOC website
 - <http://xmm.esoc.esa.int/>
 - MUST
 - Quick Look Access to close to real time Telemetry
 - **Web access ??**
 - Reporting Tool
 - Feedback re. Reports content / Layout
 - Digilog (only within ESA)
 - Realtime tracking of SPACON operations log
 - <http://131.176.57.138/DigiLogR3-2/www/LoginPage.php>

- Solaris servers EoSL in 2012
- Solaris clients EoSL in 2011
- Solaris 8 OS, EoSL in 2012
- Sun Equipment is very expensive
 - 3 disks @ 150G for 5K!
- SPARC clients can no longer be procured
- Proposal is to move to a LINUX based system:
 - Porting of Current MCS Software
 - S2K 3.1 was designed to run under both LINUX and solaris
 - Issues with Mission specific components
 - Possible minor changes in interfaces (FTS)
 - Activities to start late 2011, with migration end 2012.

- Following PI Workstations are located at MOC:
 - 2 * SPI, fully functional
 - 2 * IBIS, 1 fully functional
 - 1 awaiting security plan approval by ESACERT
 - 1 * JEM-X
 - Awaiting Security plan approval by ESACERT
 - 1 * OMC
 - 1 * IREM
 - Awaiting Security plan approval by ESACERT
- Effort in maintaining PI workstations is increasing, mostly due to stringent ESA security requirements

■ Current Status:

- All revolutions up to revolution 1009 regenerated and sent to ISDC
- From revolution 1010 onwards TCO in NRT is aligned with delays in regenerated TCO (REV_3)
- SRON confirmed REV_3 NRT timing at last CRAB

■ Tool to regenerate TCO is still available and can be used in case of timing problems.