

ISDC for the INTEGRAL USER GROUP

Carlo Ferrigno (ISDC)

ESAC, 4-5 February 2015

ISDC Status

- Swiss funding for 2015-2016 approved. Operations guaranteed. Possible issue with ESA contract and strong CHF.
- Funding for later are linked to ESA's decisions and budget constrains.
- Manpower allocation is stable at ISDC (share with other projects).
- The level of support for INTEGRAL is satisfactory.
- Re-organization of the Operation hardware and software has been done to ease maintenance and increase performance.

Quick look analysis of INTEGRAL data

- 6 GRB in the IBIS Fov in 2014
- ~200 GRB/year in SPI ACS. Used for IPN triangulation.
- Inform PI of Open programs of the observation status.
- Inform all PIs of data rights in case of problems or relevant serendipitous sources (no data rights).
- 13 ATeLs related to INTEGRAL discoveries
- We inform the PI of public programs before using the observations.

ISDC Operations/data distribution

- NRT data are available **within 3 hours. Smooth processing.**
- The operational archive is now revision 3
- Page to distribute data from AO I 2, public for serendipitous science.
- JEM-X off-line energy calibration not always used due to variable delivery time: need of OSA energy reconstruction step. Noticed that NRT data for JEM-X are not always available due to energy reconstruction.
- SPI gain coefficients recomputed and reconstruction stabilized.
- Small gaps in NRT telemetry due to hardware failure of the University infrastructure supporting the data transfer (switch).

Data distribution

Terms and Conditions of Use of the Data

ISOC and ISDC ensure that the approved 1-year proprietary nature of the data (or science) rights of the accepted observing time proposals are respected.

The full list of target regions with proprietary rights is provided by ISOC and can be accessed by clicking [here](#).

Scientists, who will have gained knowledge on the other sources in the course of their analysis, will not attempt to publish data pertaining to other proprietary target regions during the proprietary period.

Any non-observance of this rule will be notified by the Project Scientist (PS) to the TAC and to the journal involved.

I have read and agree to the Terms & Conditions of Use of the Data.

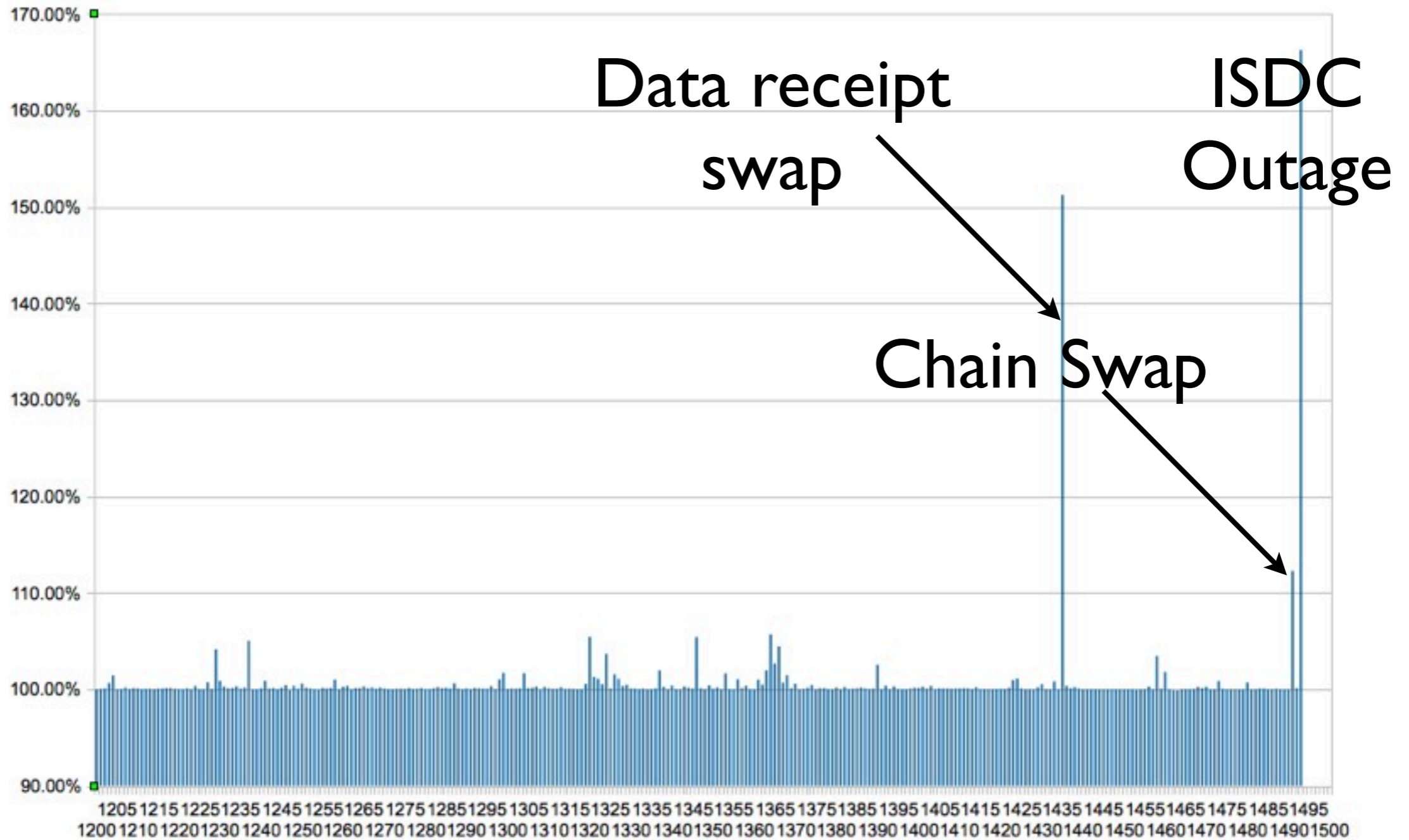
Target region ▲	NRT or CONS	Revolution(s)
190.0 12.0	CONS	<input type="checkbox"/> All target revolutions <input type="checkbox"/> 1492 ⓘ <input type="checkbox"/> 1493 ⓘ
191.0 9.0	NRT	<input type="checkbox"/> All target revolutions <input type="checkbox"/> 1497 ⓘ <input type="checkbox"/> 1498 ⓘ <input type="checkbox"/> 1499 ⓘ <input type="checkbox"/> 1500 ⓘ
Scorpius-Centaurus	NRT	<input type="checkbox"/> All target revolutions <input type="checkbox"/> 1501 ⓘ <input type="checkbox"/> 1502 ⓘ

Showing 1 to 3 of 3 entries

2. Enter your first name and last name
3. Enter your e-mail address
4. What is 8 plus 2 ? (human test to stop spam)
5. your request

Telemetry

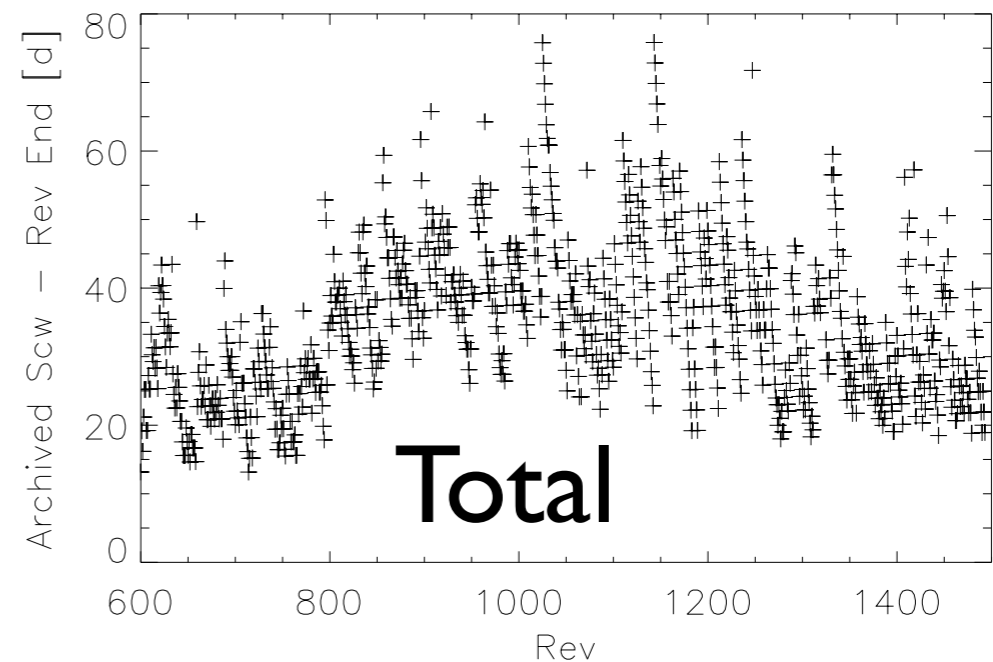
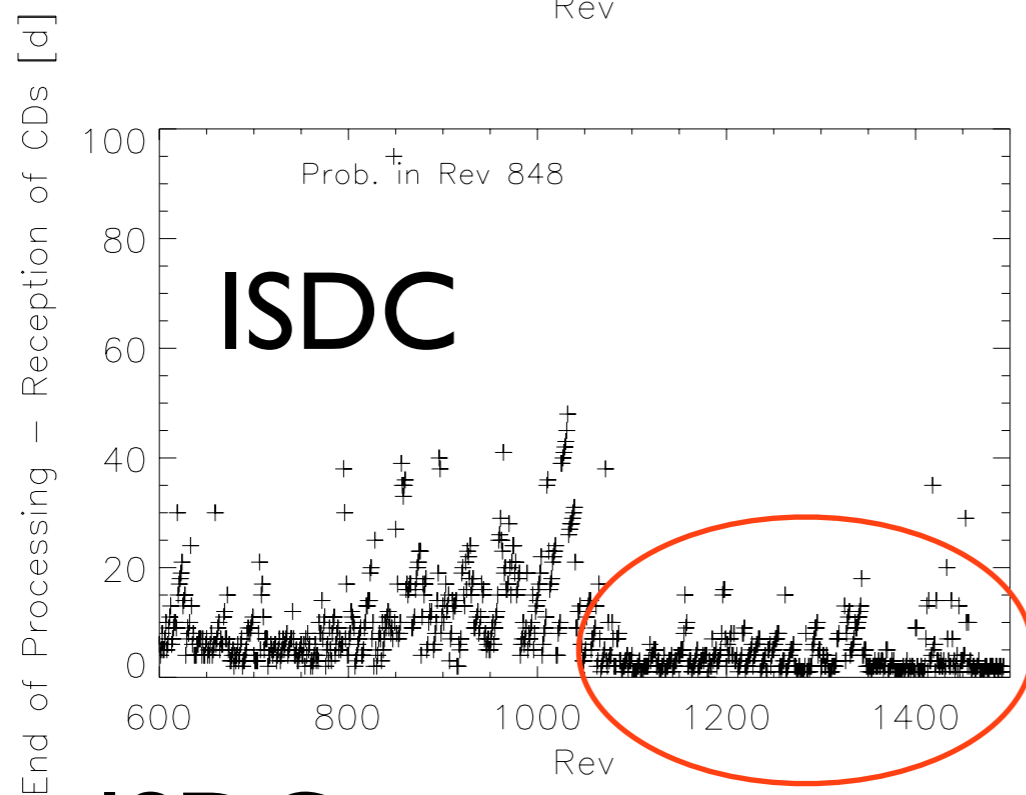
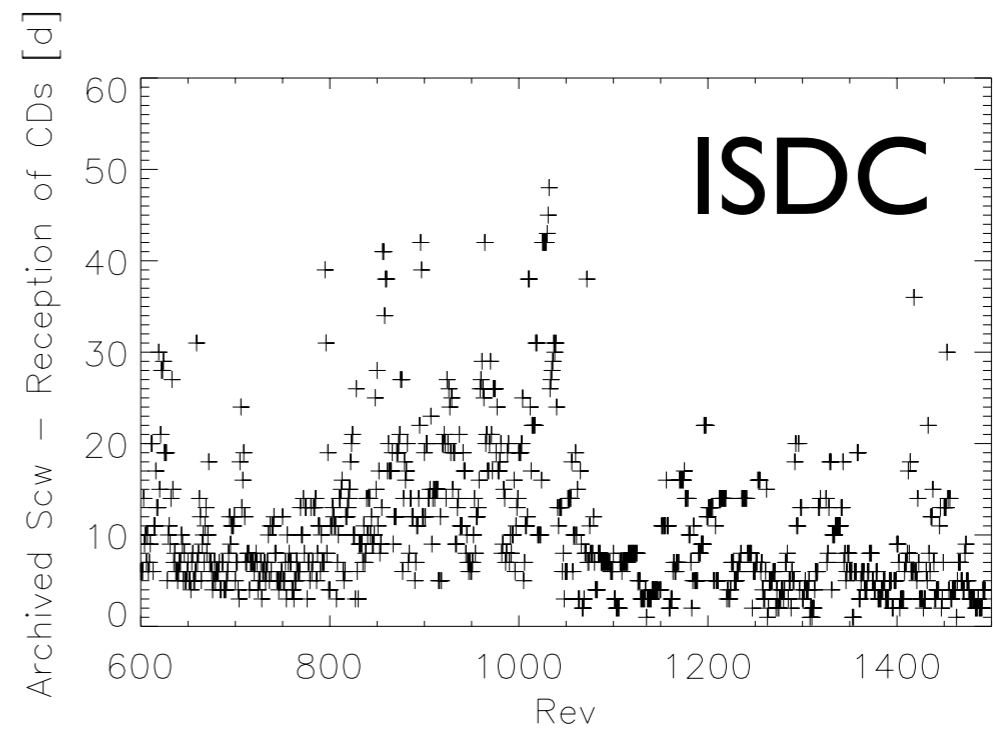
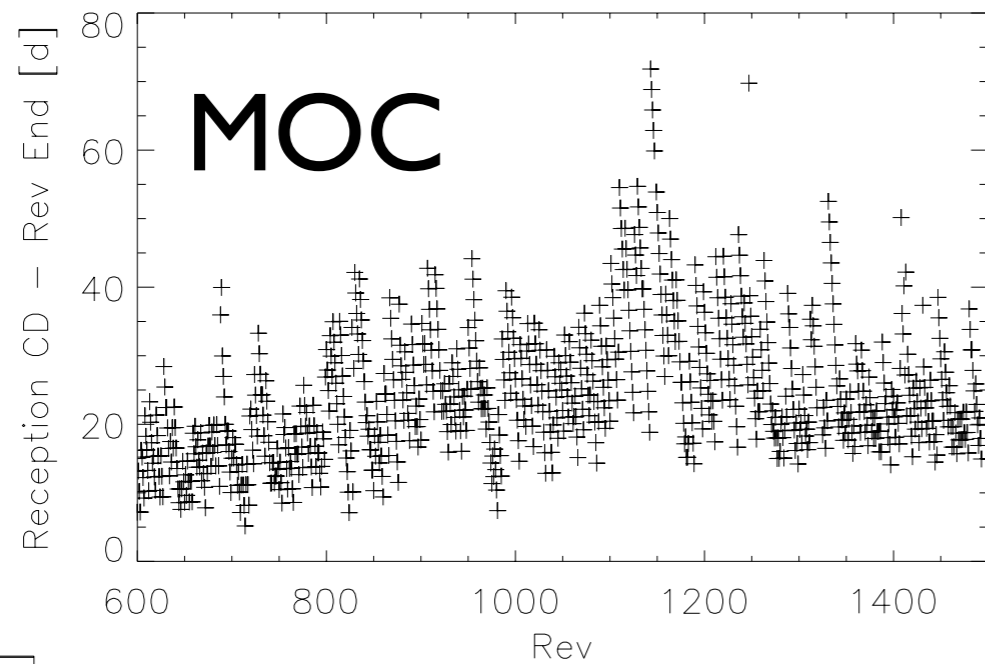
Cons/NRT



Revolution number

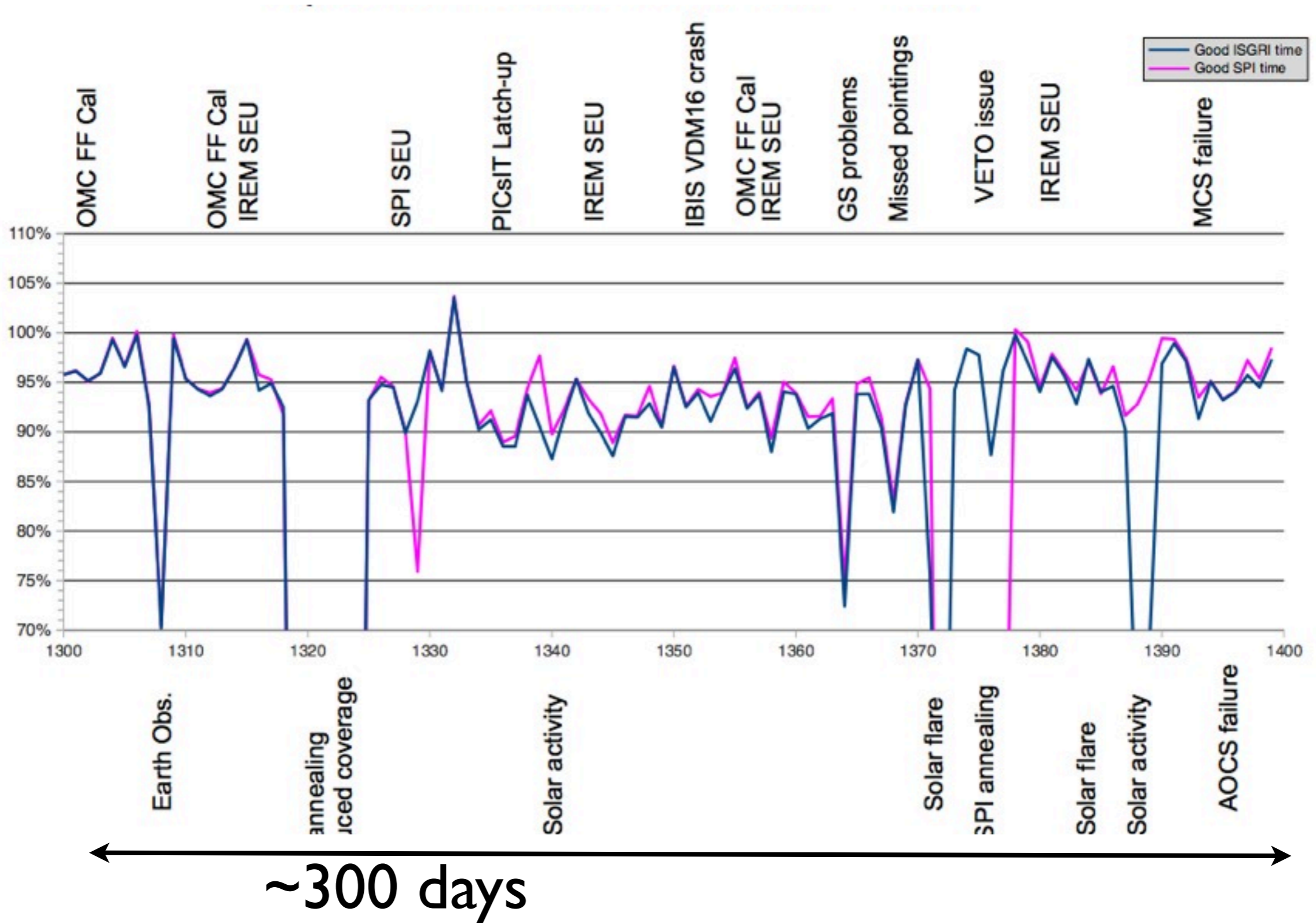
Cons distribution delay

Last processed revolution is 1493

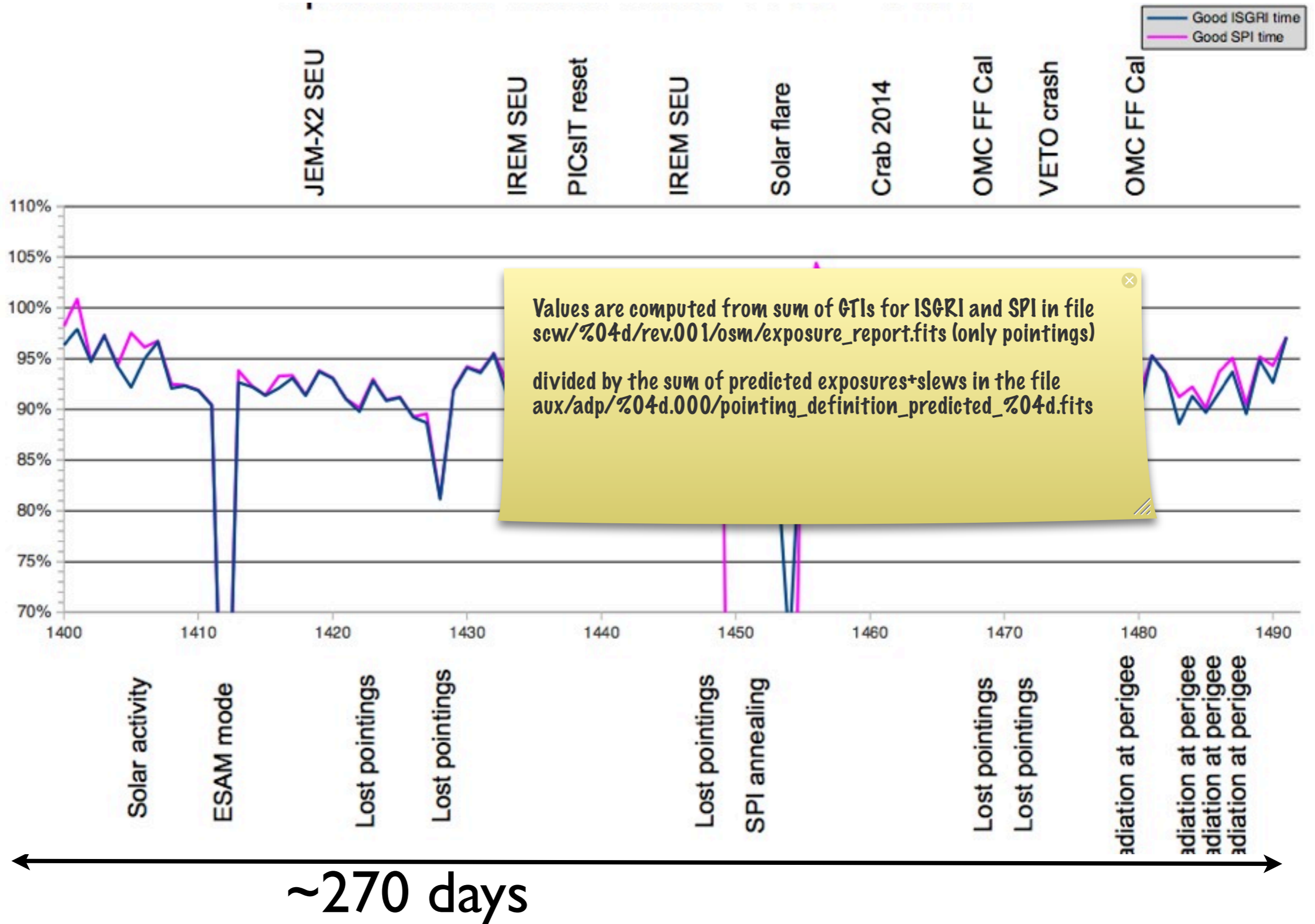


ISDC processes in < 10 days, with exceptions.

Sum of Good time intervals wrt to planned time



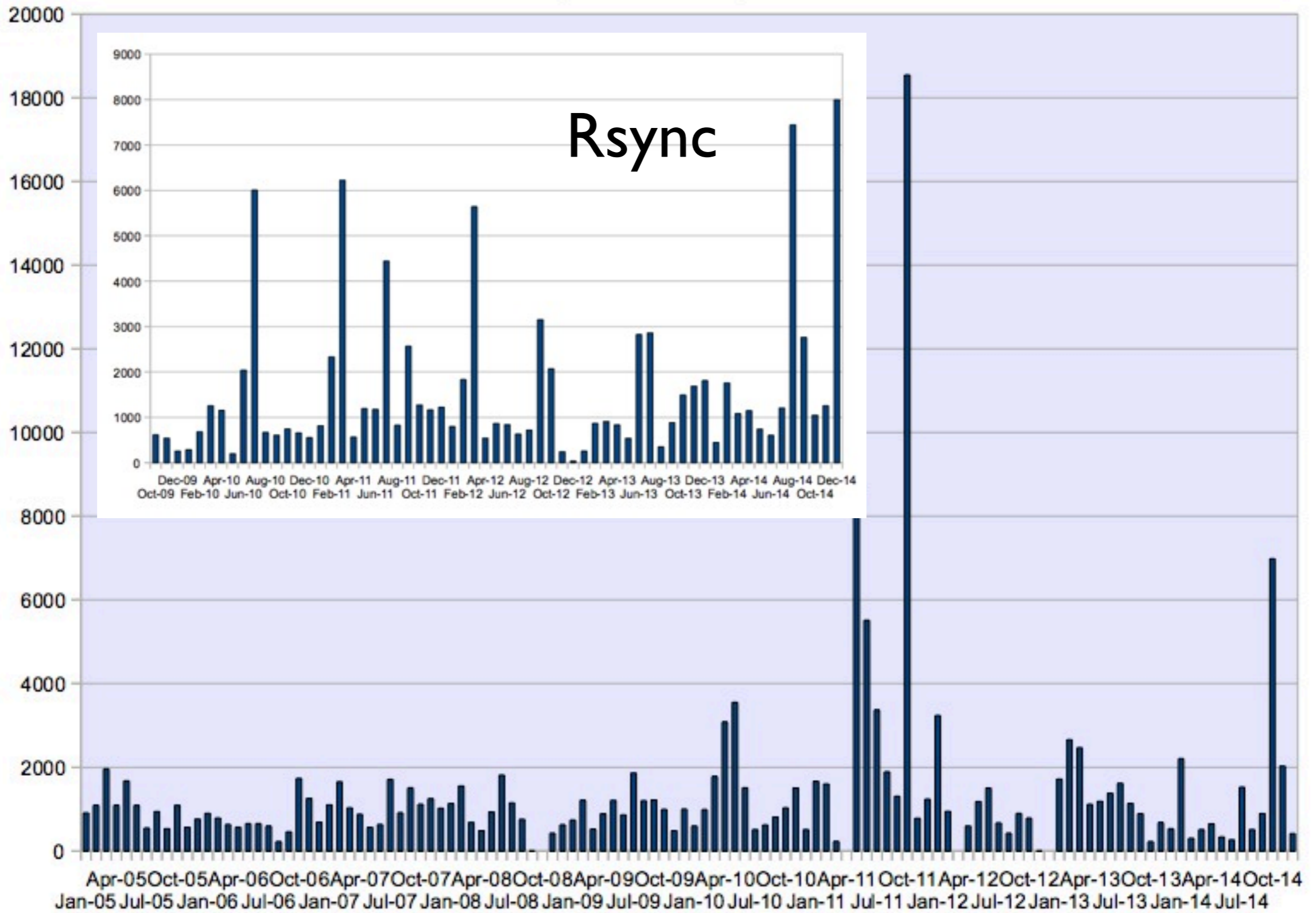
Sum of Good time intervals wrt to planned time



Data downloads

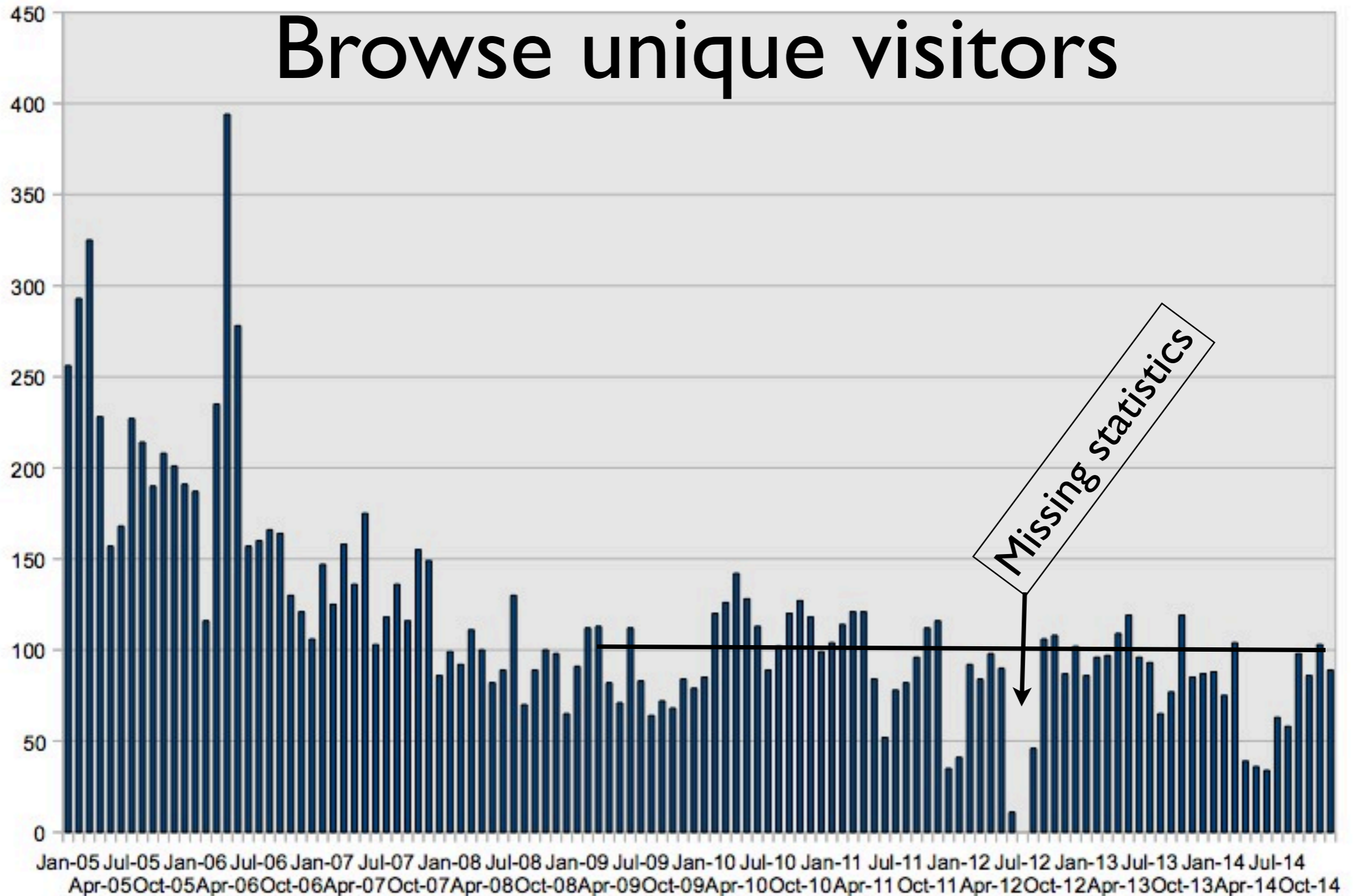
Month 2014	FTP		Browse		Rsync		Total	Total unique visits
	GBytes	accesses	MBytes	accesses	GBytes	accesses	GBytes	
January	2203	114	783	88	448	20	2652	222
February	301	121	493	75	1760	39	2061	235
March	510	238	836	104	1085	41	1596	383
April	647	118	72	39	1149	16	1796	173
May	334	105	0	0	739	14	1073	119
June	265	53	193	34	604	14	869	101
July	1521	58	379	63	1211	18	2732	139
August	506	70	259	58	7444	17	7950	145
September	891	70	406	98	2761	27	3652	195
October	6981	49	884	86	1049	25	8031	160
November	2023	52	248	103	1255	22	3278	177
December	413	48	271	89	7997	19	8410	156
	Failed stats							

GB



Added Rsync since 2009

Browse unique visitors



OSA downloads

- OSA 10.1 software was downloaded 59 since its delivery (excluded ISDC downloads).
- 28 linux 64, 13 linux 32, 18 Mac (16 mountain Lion, 2 Lion), 13 source
- 19 testdata downloads
- Continuous interest.
- A few issues with Linux libraries.

High level archive, HEAVENS



The screenshot shows the HEAVENS web interface. At the top, there is a header with the ISDC logo on the left and a list of instruments: ISDC, INTEGRAL, Planck, Gaia, FACT, ASTRO-H, POLAR, CTA, LOFT, SAFARI, JEM-EUSO, ATHENA, CAP, and HEAVENS. Below the header is a navigation bar with the word "HEAVENS" and a "Basic | Advanced" toggle. The main content area is titled "Query parameters" and contains several input fields: "Source name:" with a dropdown menu "or select a famous object"; "or RA DEC:" with two input fields and a dropdown menu "Equatorial FK5"; and "Time interval:" with two input fields and a dropdown menu "MJD (TT)". Below these fields is a section for instrument selection, with a toggle "All | None" and a list of instruments: Planck, INTEGRAL OMC, RXTE ASM, INTEGRAL JEM-X, RXTE PCA, INTEGRAL ISGRI, INTEGRAL PICsIT, INTEGRAL SPI, INTEGRAL SPI ACS, FERMI LAT, HEGRA, and INTEGRAL IREM. There are also checkboxes for "Sky image", "Lightcurve with a bin size of" (with a dropdown menu "hours"), and "Spectrum". The "Energy band [keV]" is set to "17.3-80.0" with a dropdown menu, and the "Min - Max" values are "13.0" and "520.9". At the bottom of the form are "Submit" and "Reset" buttons.

- Included FERMILAT, Planck, SPI, RXTE, and XMM-Newton.
- Development on hold for funding shortage (inclusion of Swift/BAT)

110 single accesses per month

Future activity

- Routine update of IC files
- Guarantee smooth operations
- Release of OSA 10.2 to support Mac new versions (technical changes) and bug fixes.
- Next major version awaits for the ISGRI energy reconstruction.
- Prepare for long term operational phase: archive regeneration and sustainable OSA distribution.