



CENTRO DE ASTROBIOLOGÍA
ASOCIADO AL NASA ASTROBIOLOGY INSTITUTE



CSIC



OMC Calibration status

OMC calibration team

INTEGRAL Calibration Group Meeting

ESTEC, 9-3-2016



OMC status: summary

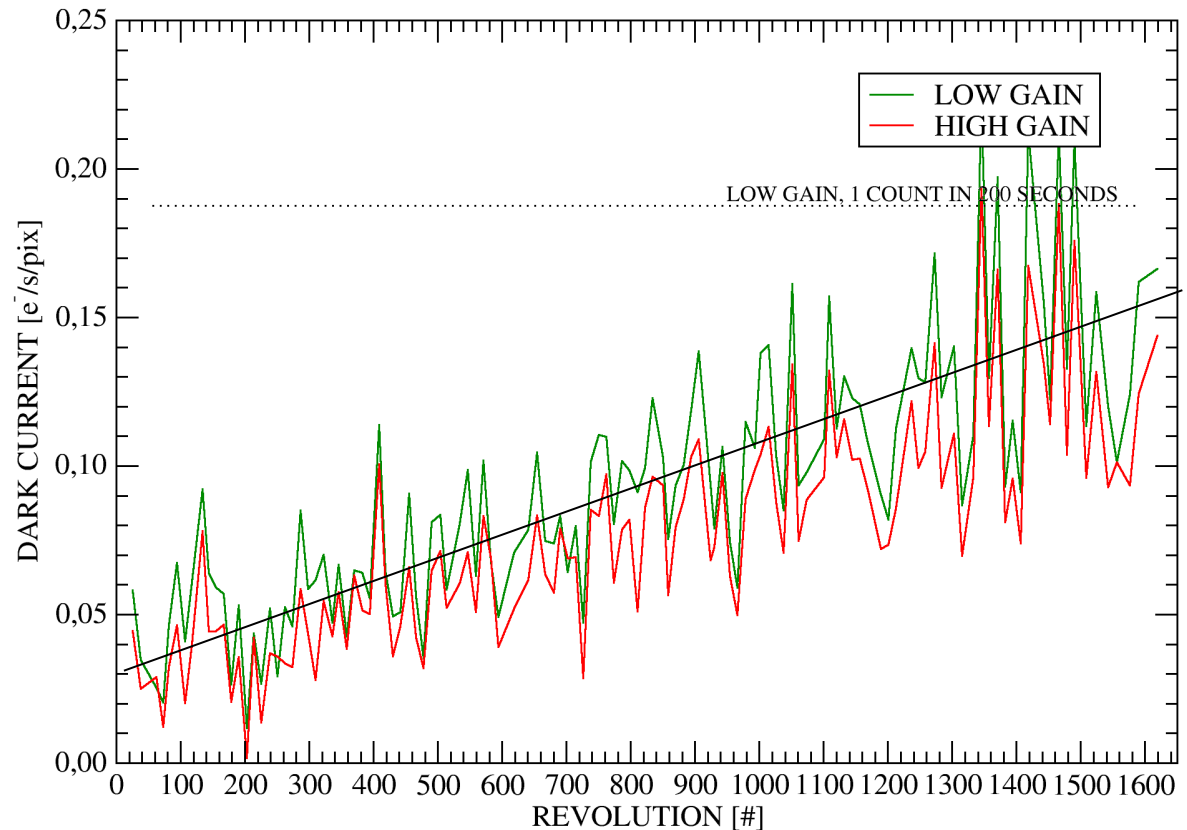
- No anomalies
- System in good health
- Nice images during last Earth occultation campaign
- Complete monitoring of V404 Cyg during outburst



CCD status

- The dark current increases slowly, but remains still within acceptable limits.
- No temperature correction done on the plot.

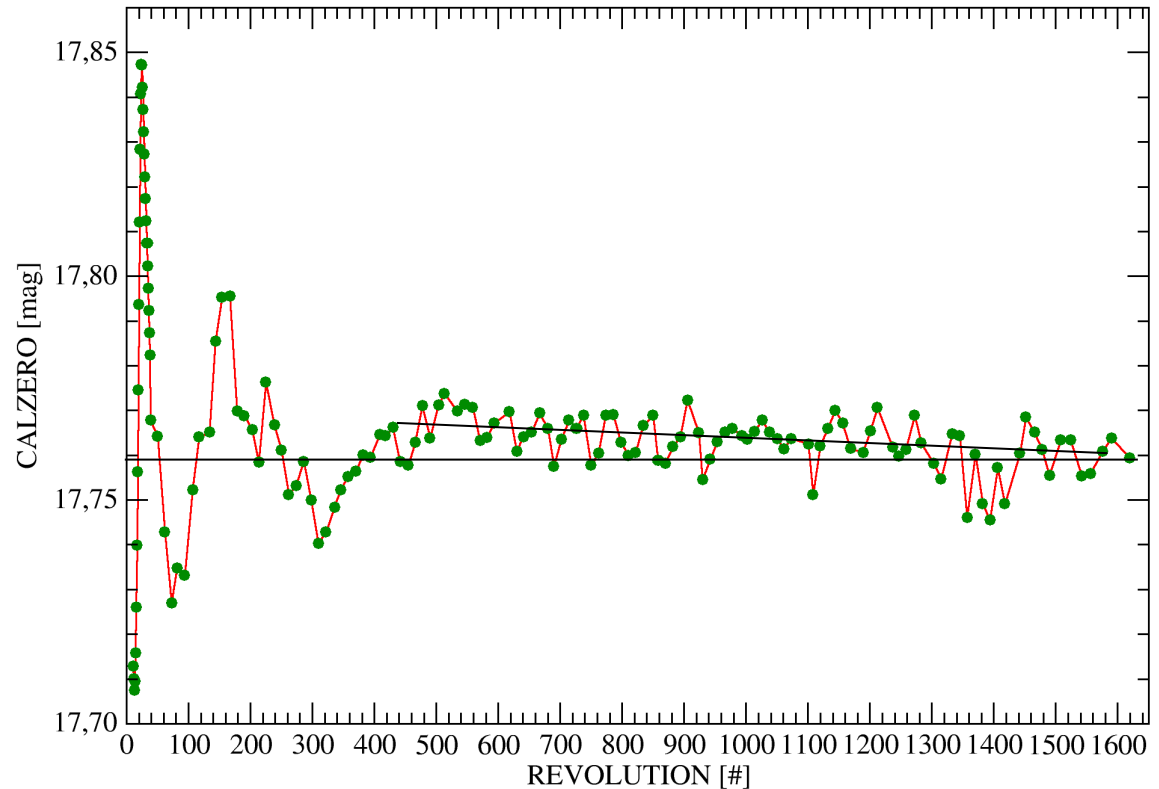
DARK CURRENT



OMC photometric calibration

CALIBRATION ZERO POINT

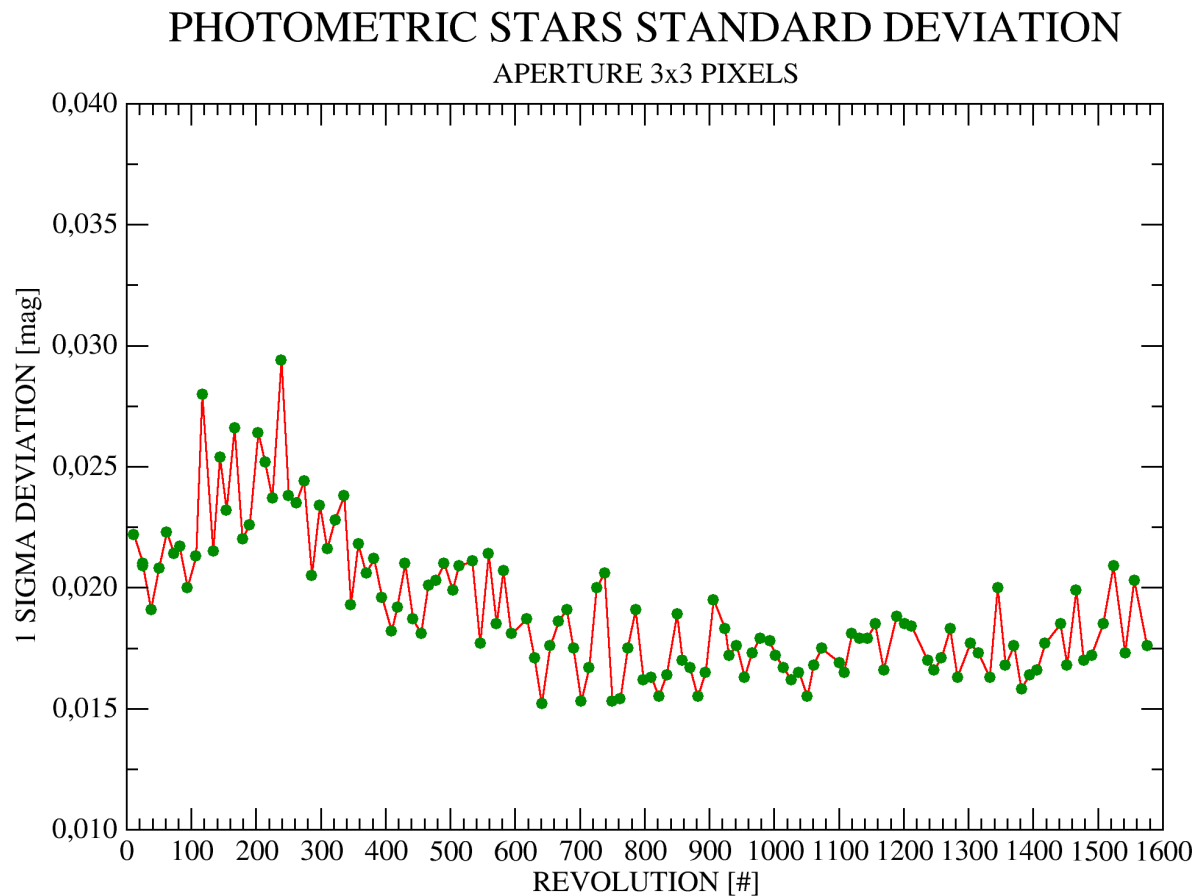
- The zero point of the calibration (a measure of the overall sensitivity) is very stable, with a small trend to decrease.
 - The darkening of the lenses is still not significant, but may be increasing slowly





OMC photometric calibration

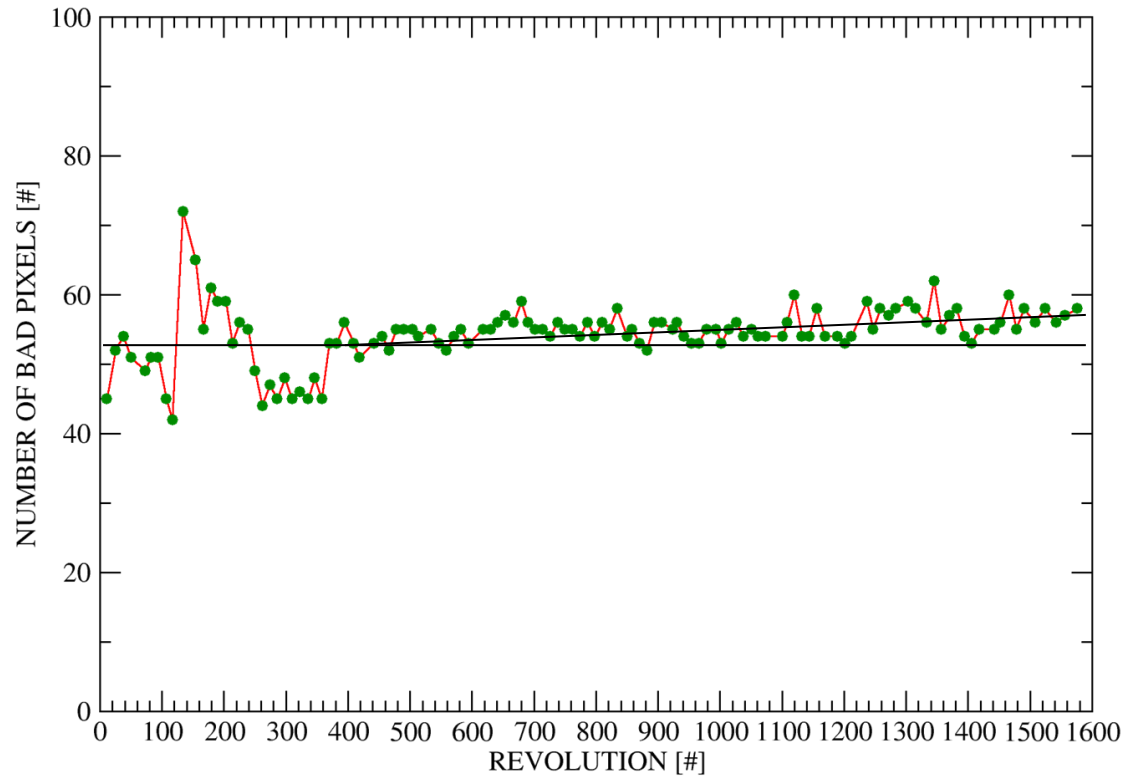
- The accuracy of the calibration remains stable



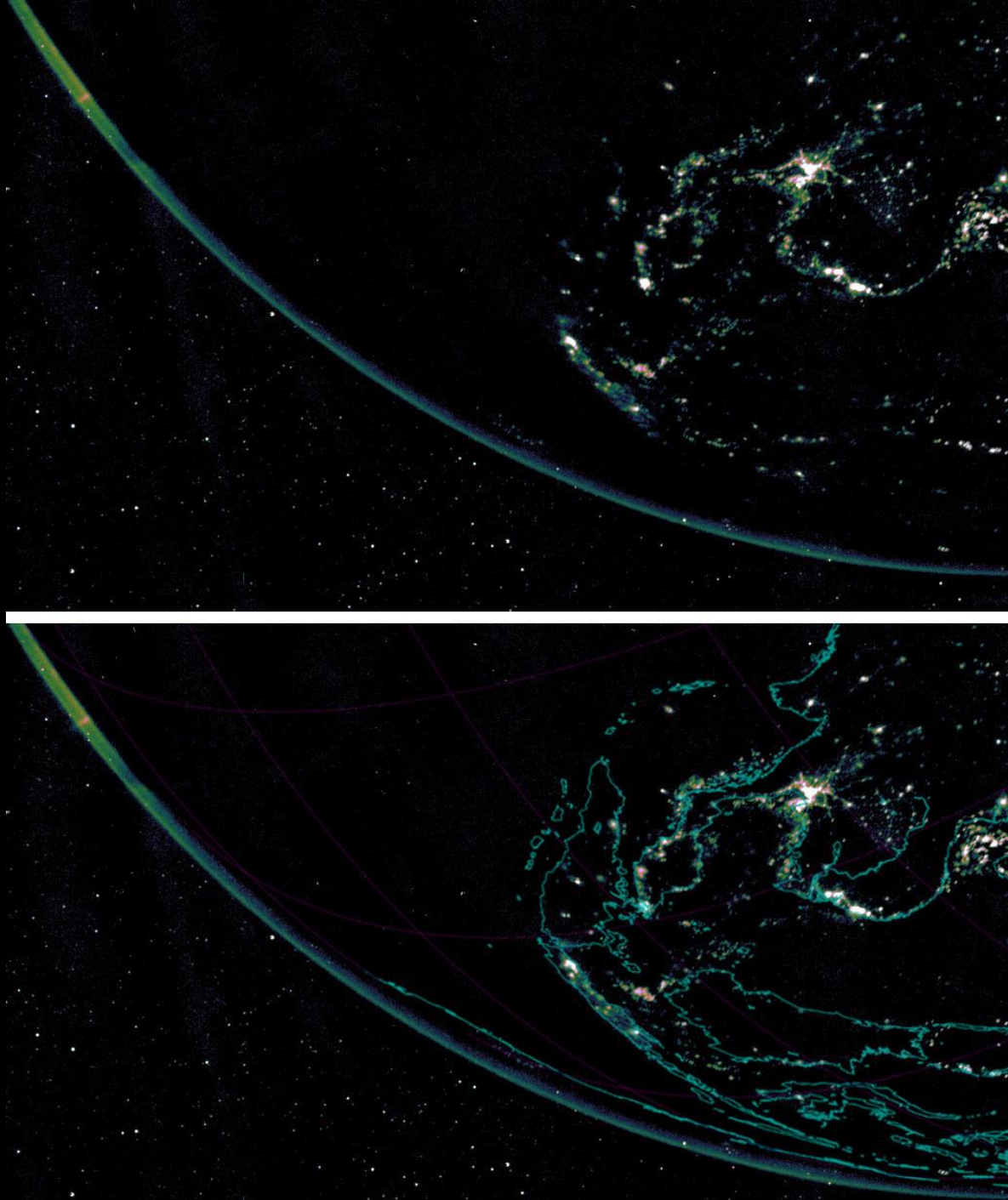
OMC photometric calibration

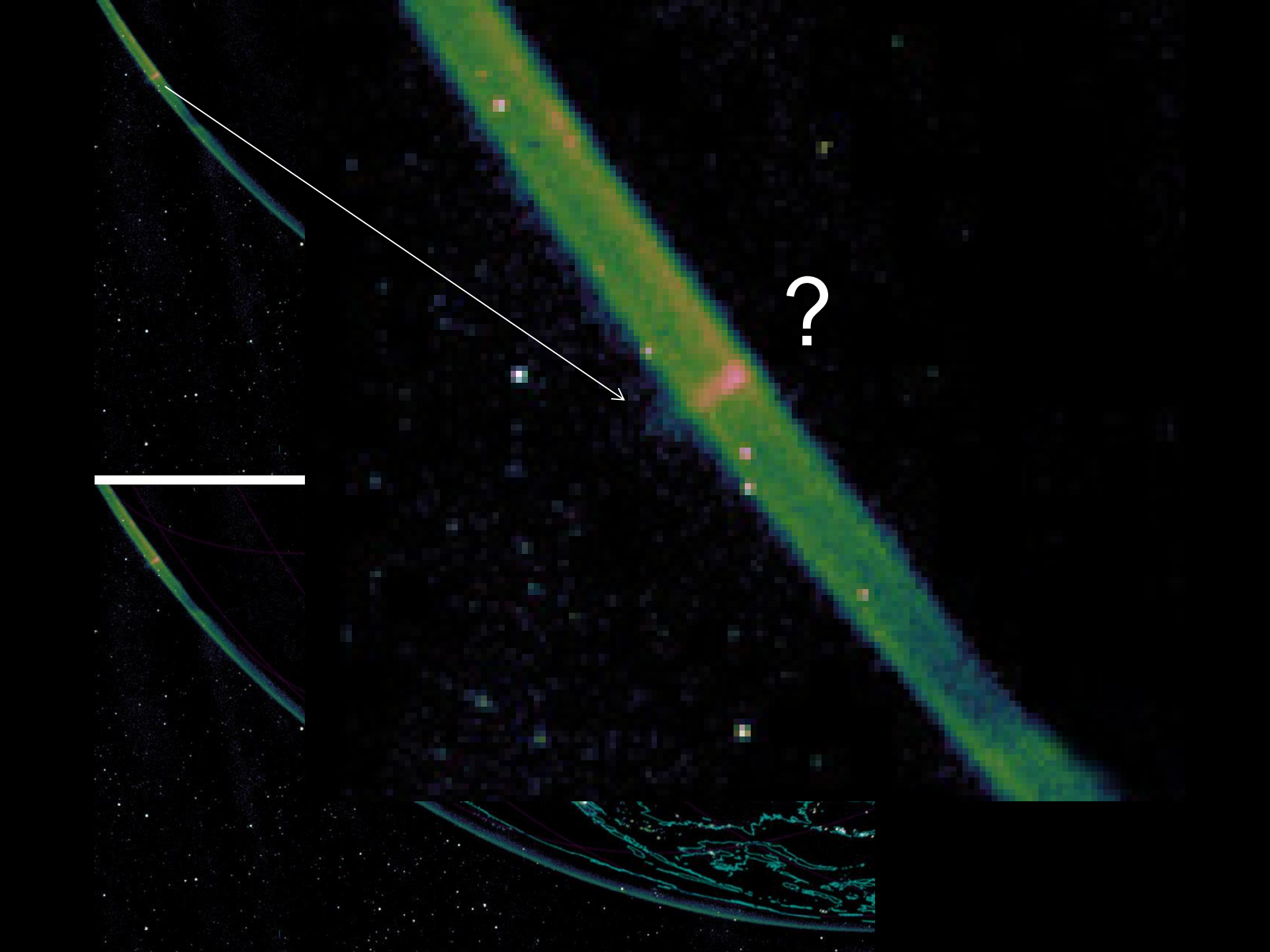
BAD PIXELS

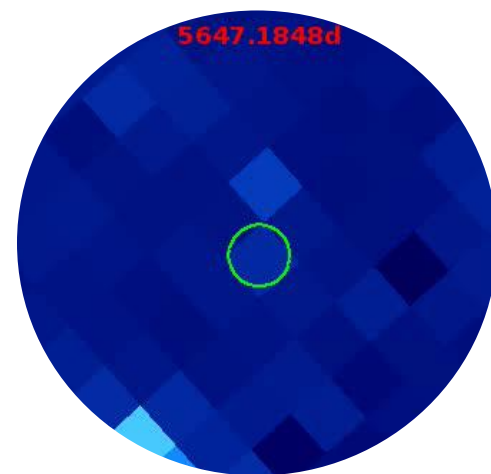
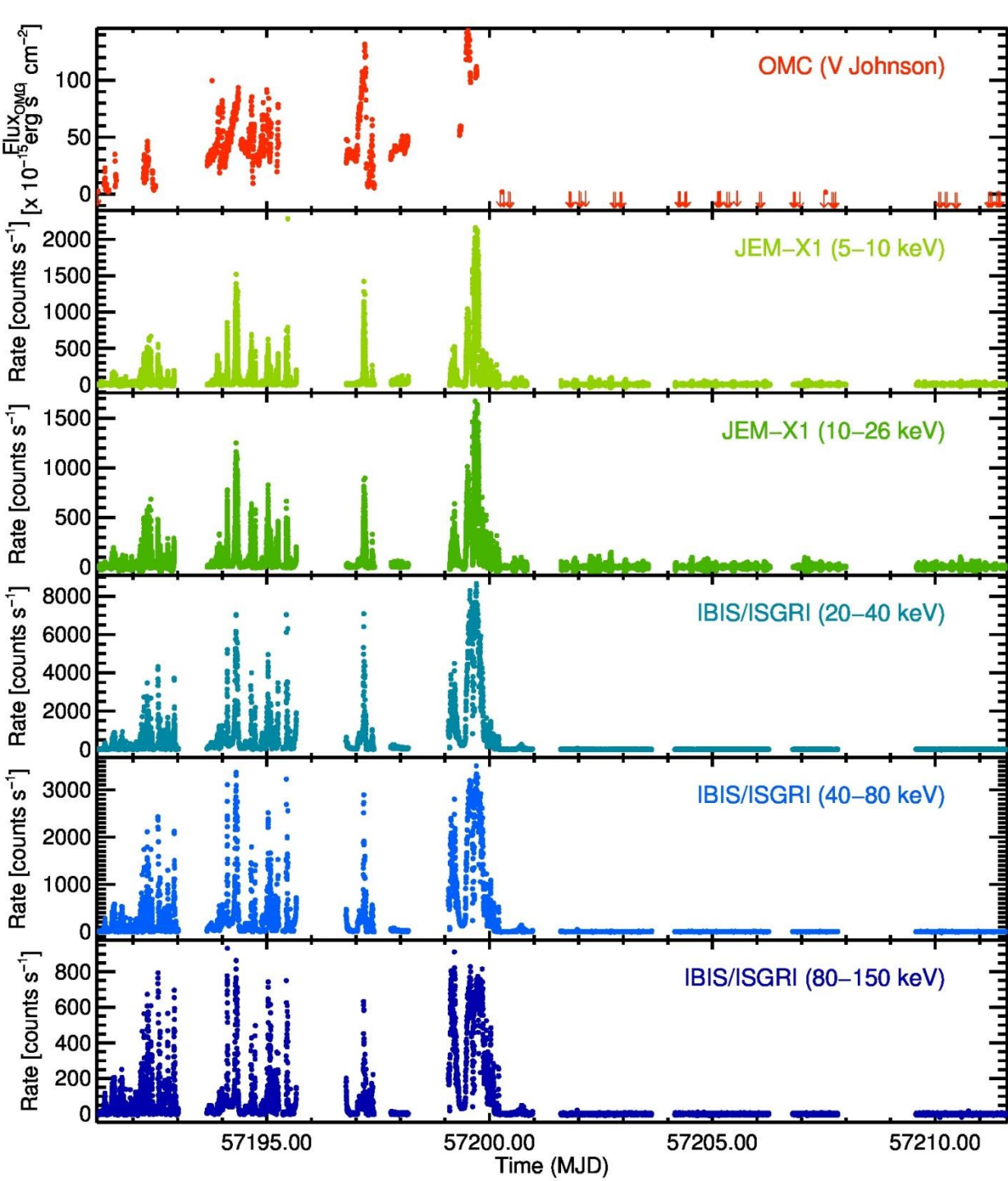
- The number of bad pixels (loss of sensitivity) increases very slowly.



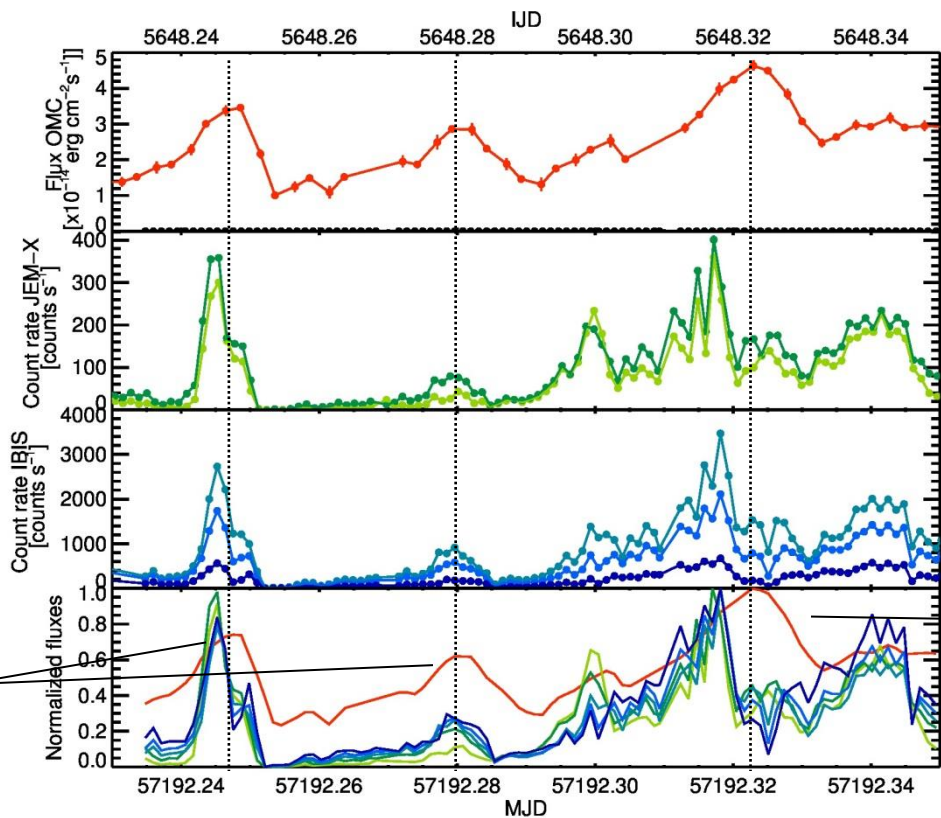
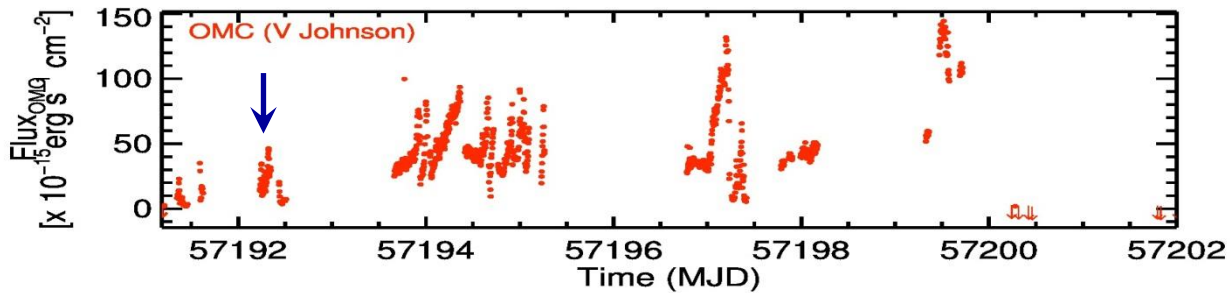
Indonesia, Malaysia,
Thailand at night





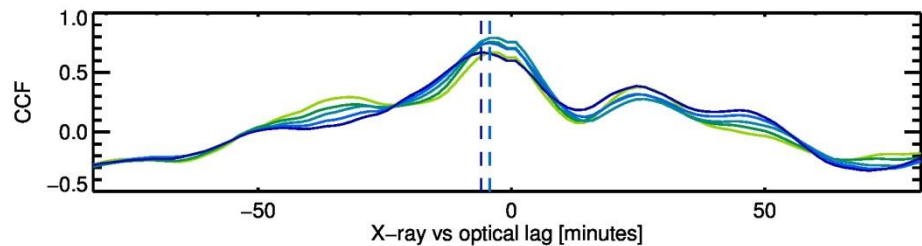


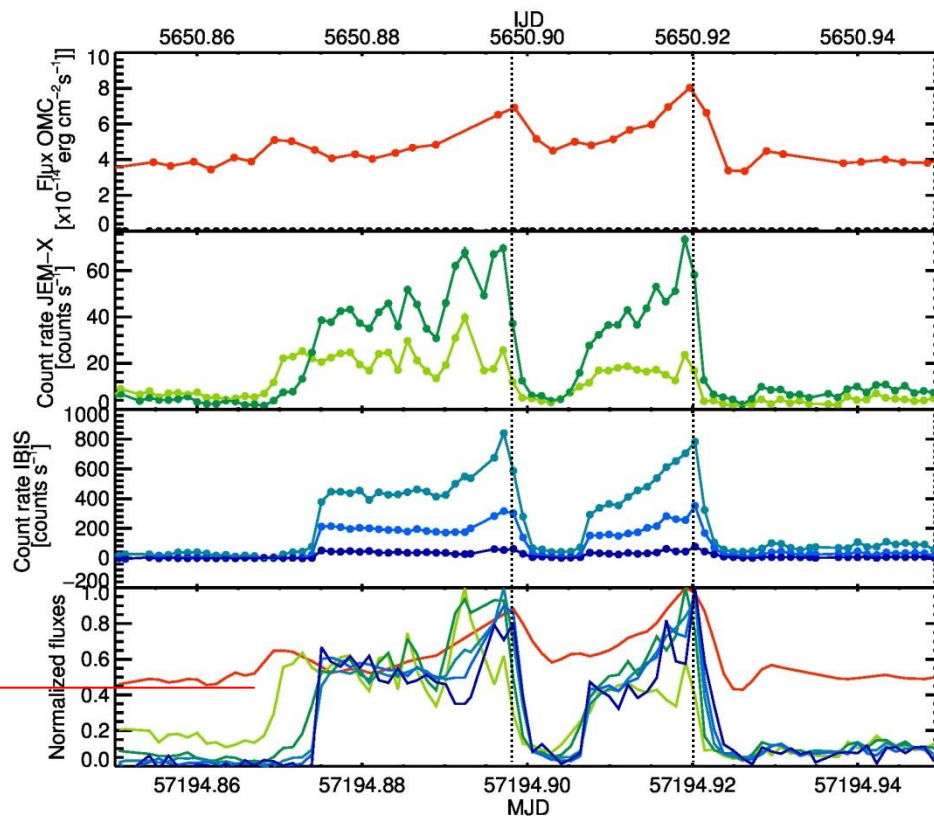
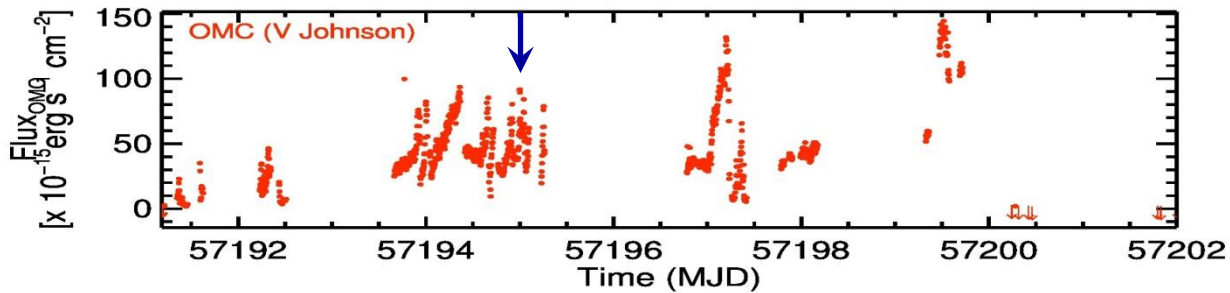
V404 Cyg OMC



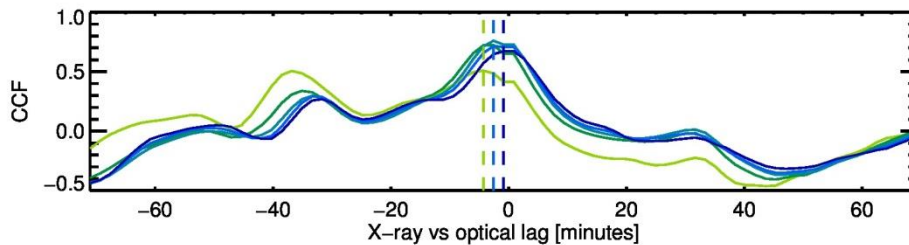
No lag?

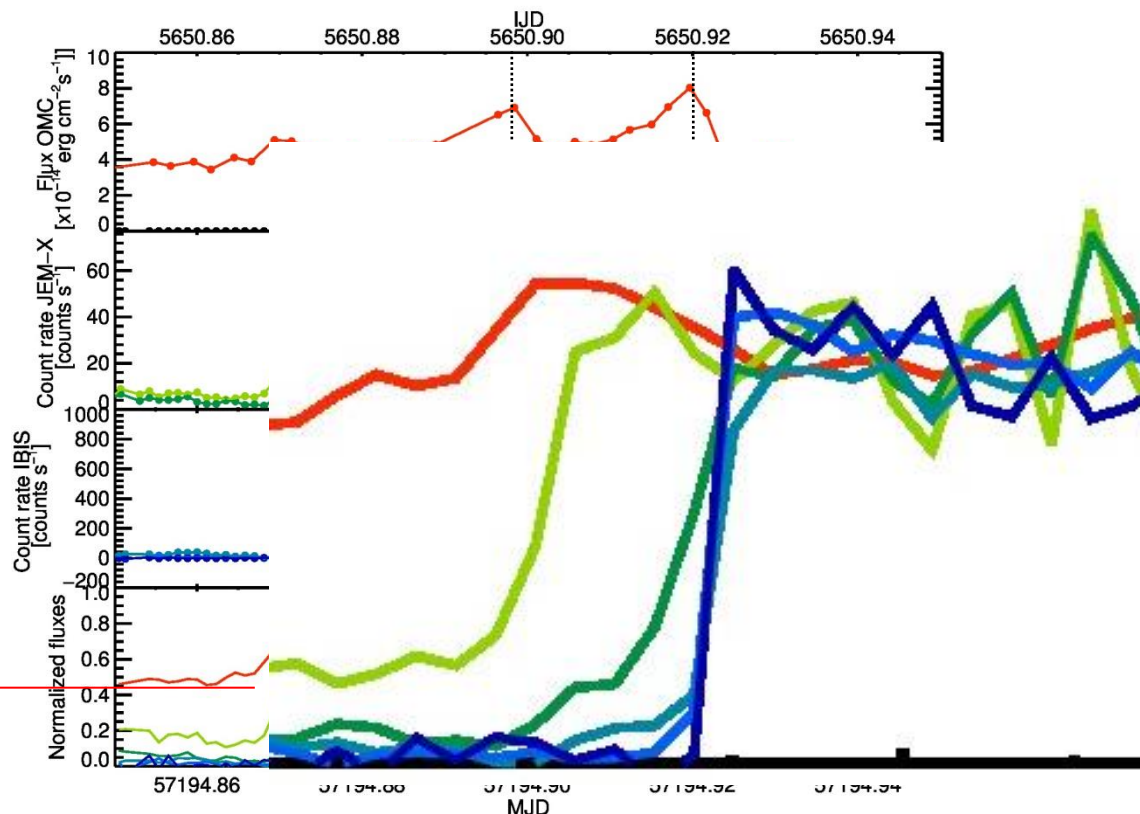
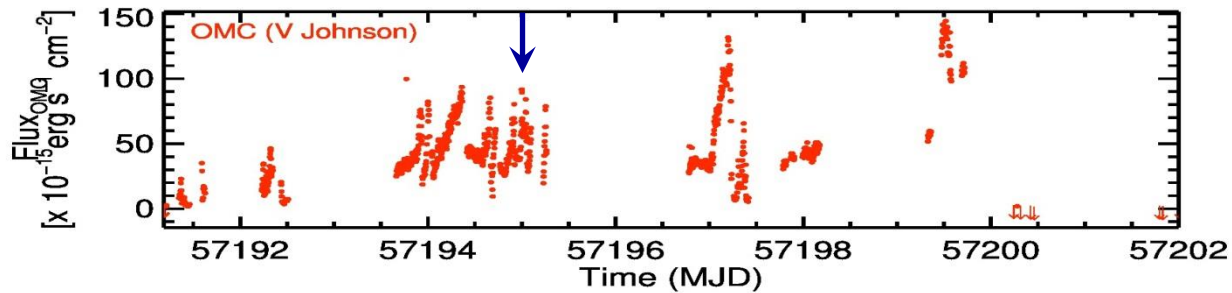
Lag





Energy dependent lag?





Energy dependent lag?

